

JERRY V. LEAPHART

**Attorney-at-Law
8 WEST Street
Suite 203
DANBURY, CT 06810**

P-203-8256265

F-203-825-6256

May 3, 2007

Via Fedex and Facsimile

AFRL / DEO - PA
3550 Aberdeen Avenue S.E.
Kirtland Air Force Base, NM 87117-5776
Attn. Rich Garcia

Dear Rich Garcia:

This is in furtherance of the telephone conference between you, Dr. Judy Wood and I held on April 27th. That conversation was in response to Dr. Wood's letter to Ms. Susan Thornton, dated April 7th that you indicated had been passed to you for reply to Dr. Wood.

The central query of the April 7th letter was whether or not certain demonstrated effects shown to exist in photographs of the destruction of the World Trade Center on 11 September 2001 were consistent with directed energy weapons having been used? We acknowledged the startling nature of the inquiry. We did not expect an immediate answer; and, indeed, no immediate answer was given.

In our thirty (30) minute conversation of April 27th, the issue was plainly left open with neither a definitive 'yes' nor definitive 'no' answer to the query having been given. Instead, the possibilities were discussed and left at that.

Both Dr. Wood and I greatly appreciated the opportunity to discuss directed energy weaponry and their effects in conjunction with the theory that the World Trade Center complex (WTC) was destroyed, in whole or in part, by such weapons.

The photographic, videographic, seismographic and atmospheric data all lend support to the hypothesis. Currently, Dr. Wood is assessing lethality information that is in the public domain.

She is aware that ablation of steel, molecular dissociation and the creation of perpendicular holes, all as seen below, are consistent with DEW.

STEEL-TO-DUST:



Figure 1 The steel is turning to dust as it falls, yet the aluminum we see does not.



Figure 2 The steel is turning to dust as it falls, yet the aluminum we see does not.



Shannon Stapleton / Reuters

Figure 3 The steel is turning to dust as it falls.



Figure 4 The steel is turning to dust as it falls.



Figure 5 "Dustification."



Figure 6 More "dustification."



http://i18.photobucket.com/albums/b108/janedoe444/ARG/toasted/midair_dustification.gif

Figure 7 Video clip of steel turning to dust.



Figure 8 Frames captured from a video showing the steel "spire" turning to dust. All the above (Figures 1 - 8) depict steel being visibly turned to dust

CRUMPLED BEAMS:



Figure 9 What caused these beams to wrinkle?



Figure 10 What caused these beams to wrinkle? We also note there is no "steam" rising from beneath these beams on a rainy day.

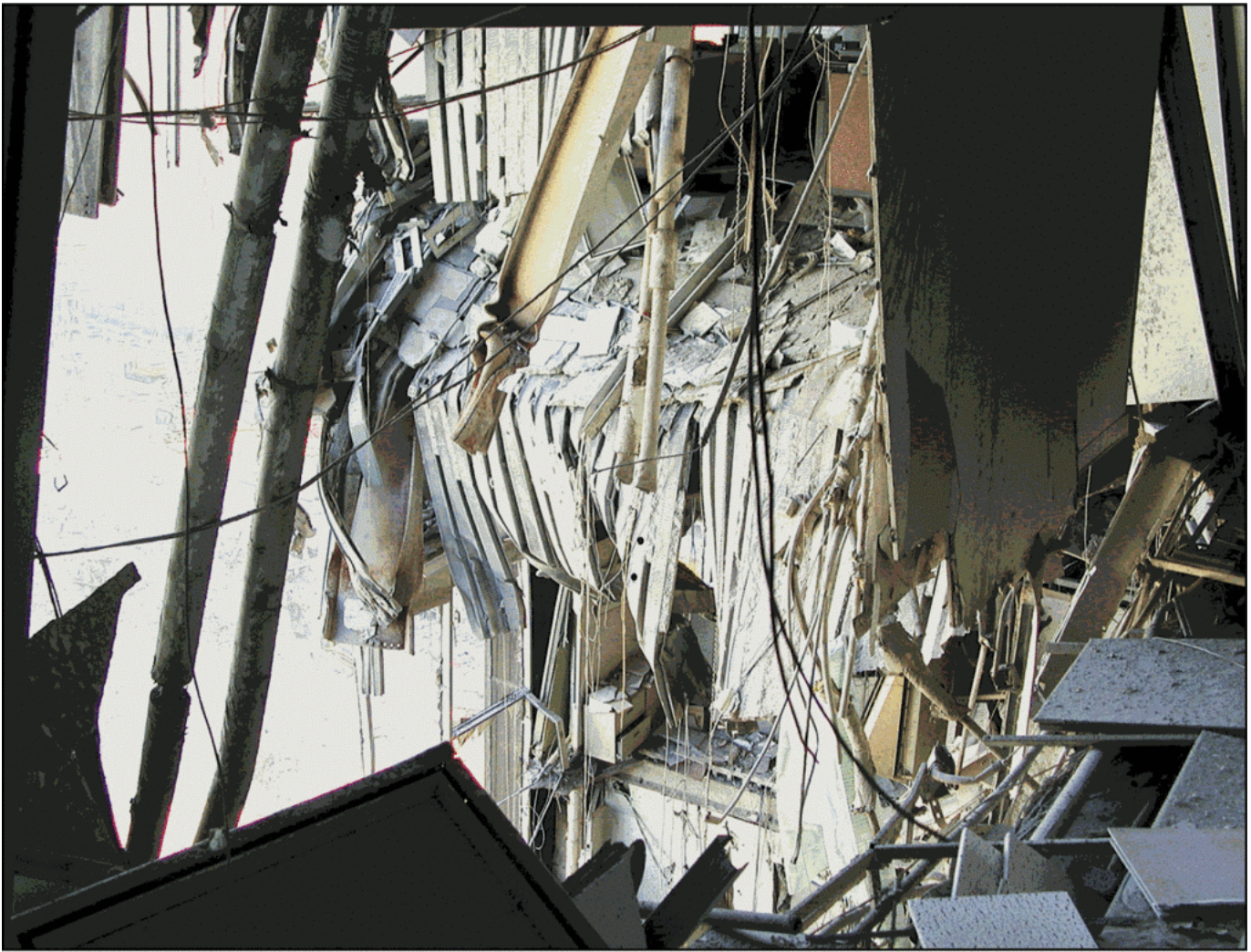


Figure 6-10 Area of collapsed floor slab in bays between C-8, E-8, C-7, and E-7, from the 15th floor.

Figure 11 A shriveled-up beam in the opening of the cylindrical cut-out of Bankers Trust Bldg.

Each of the above depict crumpled beams

PERPENDICULAR CYLINDRICAL AND GEOMETRICAL HOLES:



Figure 12 The cylindrical holes in the WTC complex are noticeable.



September 11, 2001

Photo © 2001 Bill Biggart

Figure 13 WTC3, between 10:00 AM and 10:30 AM on 9/11/01. After 10:30 AM on 9/11/01, WTC3 was reduced to two or three stories of just the column seen on the right edge of WTC3.



Figure 14 Climbing down into the basement of WTC2, shortly after 9/11/01, looking for survivors



Figure 15 The remains of WTC6 are on the right and the footprint of WTC1 is on the left.



Figure 16 The material from WTC1 is essentially absent and the vertical holes cut through WTC6 can be seen. Note the absence of material in this void.

All of the above (Figures 12-16) demonstrate perpendicular, regularized holes.

PAPER DID NOT BURN:



Figure 17 Unburned paper

INSTANTANEOUS PULVERIZATION OF STEEL OF CONCRETE AND MORE:



Figure 18 Utter annihilation, caused by DEW?

Dr. Wood relies on information available at the website of and through publications of the Directed Energy Professional Society in support of the ablation and other effects mentioned above.

Another way of assessing this matter is the timing of the destructive interval; <10 seconds. This claim is supported in the first instance by the video of the event and by the official governmental

reports. What can be seen and what the reporting agencies have all uniformly concluded is that the destructive interval was approximately 10 seconds for WTC2 and less than <9 seconds for WTC 1. As to the latter, the timing was faster than that of free-fall in a vacuum from the height of the tower. That is all but inexplicable, absent directed energy weaponry because there were simply too many completely undamaged floors for none of them to have created some resistance. Faster than free-fall in a vacuum is simply untenable.

Below is the seismic data that Dr. Wood further relies on in confirmation of the timing issue:

SEISMIC DATA:

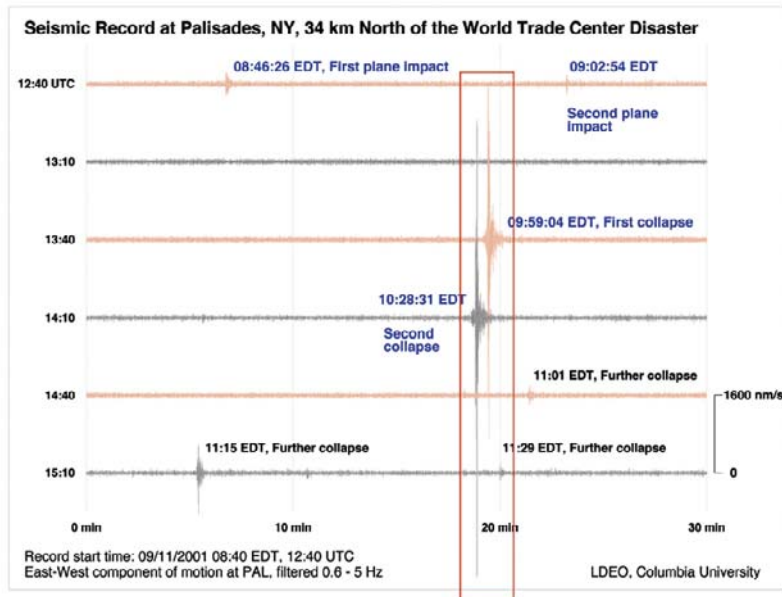


Figure 19 Seismic signals on 9/11/01

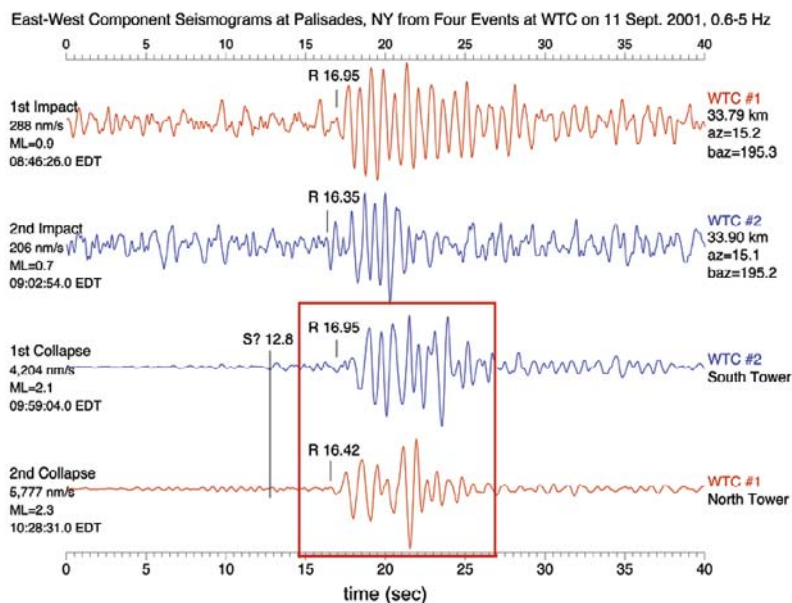


Figure 20 Seismic signals on 9/11/01, time-expanded view

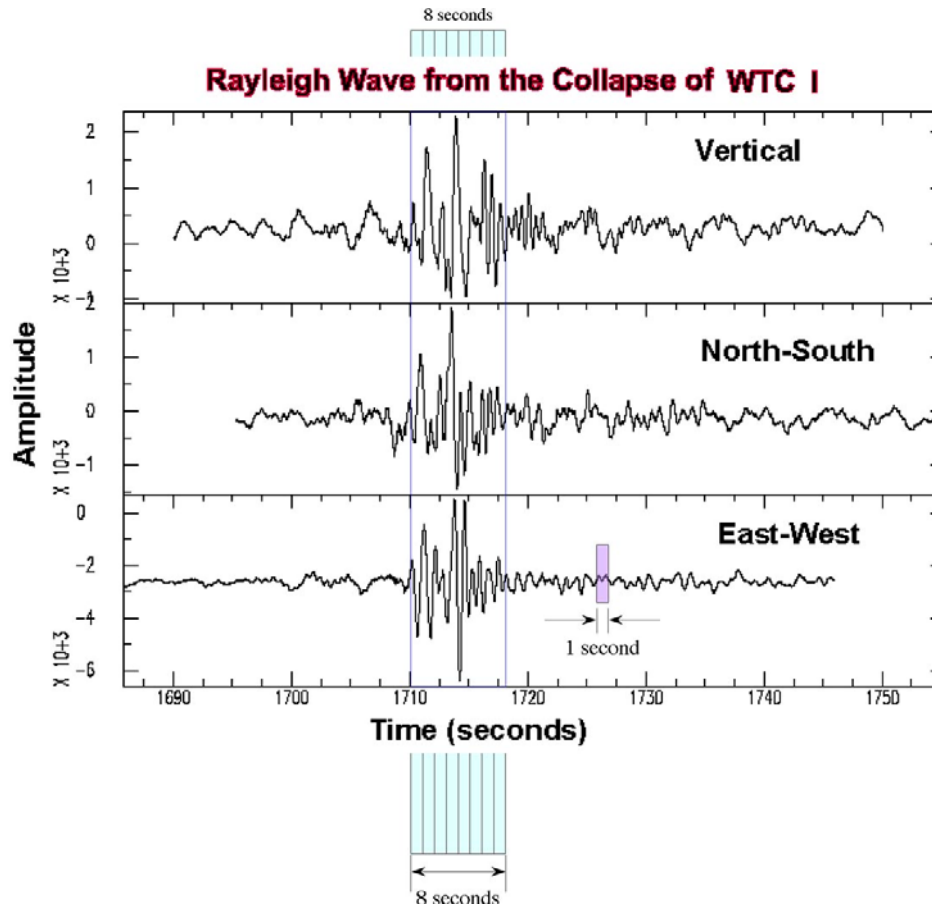


Figure 21 The destruction of WTC1 appears to have taken less than 8 seconds.

Eyewitnesses also report phenomena consistent with DEW; including, by way of example, steel bars disappearing; and, more ominously, people disappearing. They also report hearing sound that is frequently described (by multiple witnesses) as that of a high pitched "jet engine." They also experienced what was described alternatively as high winds and/or hurricane force winds.

The Space Shuttle sent back photographs showing the extent to which the process of destruction resulted in the creation of a very high plume of particulate matter that Dr. Wood refers to, colloquially, as "dustification," as seen here:

DUSTIFICATION SEEN FROM SPACE SHUTTLE:



Figure 22 Photograph believe to be from 9/12/01

On behalf of Dr. Wood, I would appreciate an opportunity to present other of the rather voluminous data that Dr. Wood has compiled and/or invite you and appropriate representatives of the Air Force Research Lab, Directed Energy Directorate, to 'surf' Dr. Wood's website where a significant portion of data has been compiled and laid out in explanatory categories.

That website is:

<http://janedoe0911.tripod.com>

Upon doing so, I think you and your colleagues may well wish to have further discussions with us.

Respectfully,

Jerry V. Leaphart

Epilogue:



Figure 23 Picture of Edna Cintron as she stood in the epicenter of where a jetliner is said to have crashed into WTC 1:



Figure 24



Figure 25 The perpendicular holes are found in several buildings and in the streets.