

# Directed Energy Weapons and the World Trade Center

Len Bracken Reports

The September 11, 2001 strikes in New York and Washington vie with Pearl Harbor as the most consequential surprise attacks in U.S. history. To this day, mainstream historians dismiss the notion that Franklin Roosevelt and George Marshall allowed the Pearl Harbor attack, despite solid evidence supporting the charge.

Likewise, contemporary analysts refuse to accept facts demonstrating a government cover-up of 9/11. More importantly, they choose to ignore that it was an act of war by sinister U.S. statesmen, such as Richard Cheney and Donald Rumsfeld, against the civilian population.

Universal history will judge the relative importance of the Second World War and the War on Terror; but the former, with its clear-cut winners and losers, may become less important as the latter becomes an endless series of secret civil wars using terror to gain and protect wealth and power.

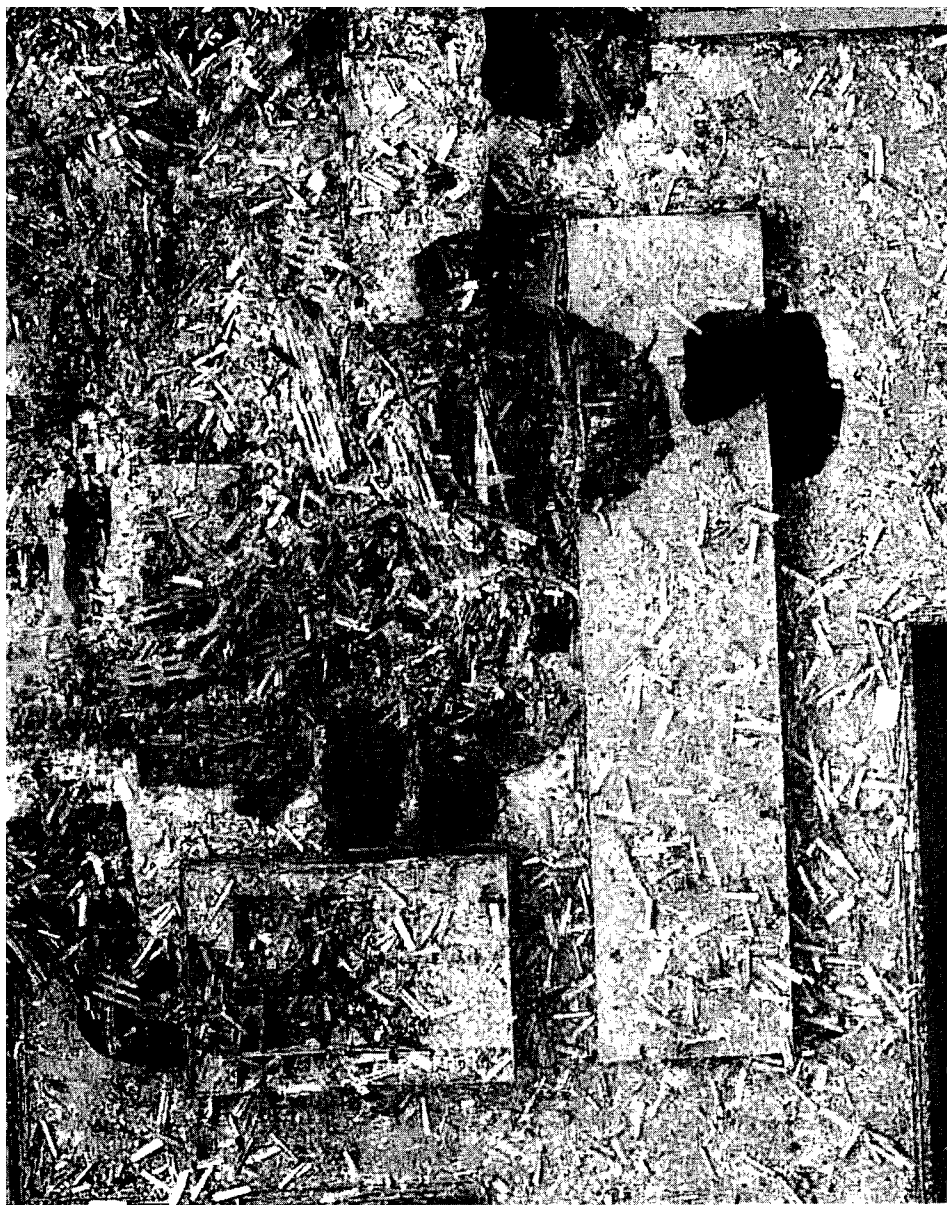
As with the gross lies of the twentieth century—false pretexts for war, political assassinations and fake terror—the 9/11 attacks have come under investigation by citizens who would set the record straight and attempt to reverse the consequences. The citizen probes into what transpired in New York and Washington are more intensive and extensive than was possible in the past century because of greater photographic evidence, advanced research tools and internet communications. And as the various factions and personalities in the 9/11 truth movement jockey for the privilege of disclosing the truth—or poisoning the well with disinformation—Judy Wood emerges as an exceptional figure who, with her blend of science training and common sense, has arrived at a conclusion that is at once fantastical and convincing: directed energy weapons were necessarily deployed on Black Tuesday.

This assertion is not the conjecture of an uninformed theorist, but rather a mechanical engineer with research interests in experimental stress and deformation analysis, as well as the characterization of biomaterials and composite materials. With degrees in civil engineering, applied physics and materials engineering science from Virginia Polytechnic Institute, Dr. Wood has unique capabilities with which to analyze 9/11. She co-founded the Society for Experimental Mechanics' Biological Systems and Materials Division and currently serves on the SEM Composite Materials Technical Division. With expertise in moiré interferometry—a full-field optical method used in stress analysis—and many technical publications in refereed journals, Dr. Wood sees that which is ignored or is obscured by well-placed myths.

"I started to question the events of 9/11 on that same day when what I saw and heard on television was contradictory and appeared to violate the laws of physics," Wood says. "Since that day I have used my knowledge of engineering mechanics to prove that the collapse of the World Trade Center twin towers could not have happened as the American public was told."

## Rival 9/11 Truth Groups

From 1999 to 2006, Wood was an assistant professor in the Mechanical Engineering Department at Clemson University where she encouraged her students to share her interest in the bizarre events of 9/11. She is deeply saddened that one student, Michael Zebuhr, was murdered quite possibly for his participation in investigating the



**Cylindrical Holes:** Unexplained holes are seen in the roof of WTC5 after the collapse of the Twin Towers. According to Judy Wood, "A directed-energy weapon by definition could cut into buildings, destroy material and leave discrete boundaries in the buildings. We know of no other explanation that has been offered for these peculiar holes." [<http://janedoe0911.tripod.com/StarWarsBeam4.html>]

crime of the century. He led the first and only Clemson Scholars for 9/11 Truth meeting on March 10, 2006, and was shot in the head ten days later in Minneapolis. Two people have pleaded guilty to the crime, but they may have been coerced. Circumstances related to the crime scene, police search and news reports could suggest that others unknown, conceivably with ulterior motives, may have been involved.

Before his death, Zebuhr worked with Wood on experiments that cast into doubt the contention of former Brigham Young professor Seven Jones that the towers collapsed in a

controlled demolition using a thermite compound. Jones insists that it was molten iron and not aluminum seen streaming from the towers, contending that aluminum cannot glow in daylight conditions. The experiments conducted by Wood and Zebuhr show, on the contrary, that aluminum does glow at high temperatures.

Jones has resigned from Scholars for 9/11 Truth and started a rival group, casting aspersions on Wood and anyone who would entertain the possibility that directed energy weapons brought down the buildings—even though he admits that his research is

incomplete. His group announced the submission of a request for correction (RFC) with the National Institute of Standards and Technology (NIST) in a press release dated April 14, 2007. Yet as of this writing, Wood's RFC and its highly revealing supplement is the only one posted on the agency's website.<sup>1</sup>

Wood takes the polemic in stride, occasionally expressing annoyance, but without losing her calm demeanor. Originally from Orono, Maine, she has a tall, slender frame and angular features, notably a bright smile and sharp green eyes that peered in the dust and debris and saw the unfathomable. This journalist dined with Dr. Wood and other researchers following the September 2006 conference at Cooper Union in New York City, and found her to be a person who measures her words carefully, speaking with scientific accuracy. There is artistry in her use of analogy, comparing the towers, for example, to a tree; the tipping of the top of the WTC2 with a partially crushed aluminum can; or the cylindrical holes in the buildings, possibly created by a laser beam, with holes dug by a fence-post digger.

Despite her accomplishments as a scientist and a gift for presentation, Wood's research into the use of directed energy weapons will not be granted the consideration it deserves. Her RFC with NIST merits an honest response, but is unlikely to get one under this administration or even a future Democratic presidency—the admissions would be too horrendous, too "un-American," as Michael Moore put it when asked why he pulled punches in his 2004 award-winning documentary, *Fahrenheit 9/11*.

### Faster Than Freefall

In her March 2007 RFC to the NIST document entitled "Final Report on the Collapse of the World Trade Center Towers," Wood's math shows that in a vacuum the freefall times for WTC1 and WTC2 are greater than 9.218 and 9.198 seconds, respectively. Columbia University's Seismology Group, however, recorded events of

# **"I started to question the events of 9/11 on that same day when what I saw and heard on television was contradictory and appeared to violate the laws of physics." – Dr. Judy Wood**

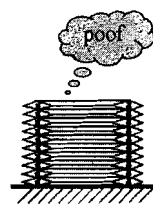
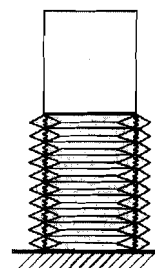
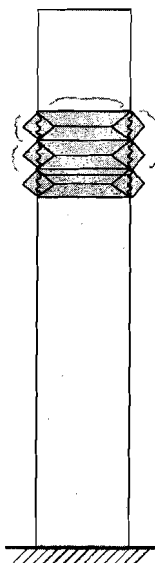
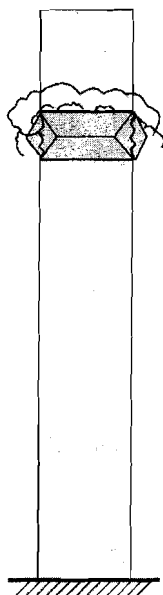
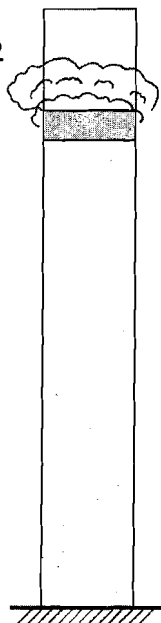
10 and 8 seconds in duration; the latter being faster than freefall. To explain how impossible this is, Wood refers to her paper "A Refutation of the Official Collapse Theory," in which she uses as an example a billiard ball falling from the top of the towers.

This journalist witnessed her presentation at the Cooper Union conference where Wood made a convincing case: two laws—the conservation of momentum and conservation of energy—support the fact that it would have taken much longer than the freefall times for the buildings to collapse if every floor "collapsed like dominos," or "if nine of every ten floors had been demolished prior to 'collapse.'" For there to have been a progressive collapse at freefall speed, Wood notes, each floor below the one collapsing would have had to give way before it was hit by the floor above.

If that were the case, "How can the upper floor be destroyed by slamming into a lower floor," Wood asks, "if the lower floor has already moved out of the way?" It may be impossible at this point to know exactly what happened, but the only reasonable explanation for Wood is that a detonation sequence took place—one far more sophisticated than thousands of charges planted on trusses and flawlessly firing at the behest of a computer program.

## **The Tipping Top of WTC2**

In the second section of her RFC, Wood takes NIST to task for its failure to adequately explain the asymmetrical tipping top of WTC2 and subsequent "inevitable," as NIST described it, symmetrical "collapse." Readers may remember the way the top 300 feet of the tower tilted as explosions ripped around the building near the 86<sup>th</sup> floor. Wood wants NIST to explain how asymmetrical fires could cause simultaneous loss of all perimeter columns



"around the entire building, all fireproofing, and along and around all 47 core columns." The engineer in Wood knows that asymmetrical damage and fires cannot cause an identical heat transfer. The lack of angular momentum is unaccounted for by NIST: as the top tips to the east, the west wall—which should have a reduced load because of this tipping—is simultaneously destroyed in massive, billowing clouds of dust.

Going back to the need to account for the freefall speed of the alleged collapse, Wood points out that freefall speed would require no resistance, whereas the disintegration of the top of the building indicates high resistance. "In fact, the observed conditions are consistent with unusual energy effects that are obvious and that mandate explanation," she said. "The failure to address the observed conditions may be evidence of fraud and/or criminal wrongdoing."

The top of WTC2 didn't tip over and fall as a block into WTC4 as one would expect; it vanished in big puffs of dust. "Not only is it not there, the main body of WTC4 isn't there either," she says, noting that the north wing of WTC4 appears to have been "surgically sliced off" from the main building, and that the main building was reduced to a suspiciously small amount of debris, having essentially "disappeared."

## **Debris Pile, Cylindrical Holes**

In the third section of her RFC, Wood cites the remarkable fact that the only destroyed buildings were part of the World Trade Center complex. Those buildings not totally destroyed, such as WTC6, had cylindrical holes in them, many holes being the same size—approximately twenty feet in diameter. Some of these holes are made with perfectly vertical cuts, such as the ones in WTC6. Nearby buildings, however, were hardly damaged. Just as the debris piles from the 110-story buildings don't add up—the

**Pancake Theory:** If the government's theory is correct, the collapse of WTC1 should have produced a rubble pile at least 1/8 of the original building height (12.5%).  
[Graphic: Judy Wood]

before and after photos illustrate this, as does Wood's use elsewhere of the debris from a sports dome collapse—the holes themselves are, generally speaking, empty, hollowed-out cylinders.

The five-story debris pile from WTC7 is the exception, suggesting it may have been demolished by conventional means—from the bottom up, as Dutch demolition expert Danny Jowenko, for example, holds. Jowenko insists that fire could not possibly have felled the towers. The steel on the ground around the remains of the core where WTC1 once stood does not equal what would be there had this been a conventional collapse. WTC6, for example, was an eight-story building and its remains are vastly higher than those of WTC1, which, for the most part, appear to be barely higher than ground level.

### Toasted Vehicles

The photographs of vehicles that accompany Wood's RFC reflect what she calls "unusual and unexplained" energy effects—mild terms when one takes in rows of cars half a mile away on FDR Drive with wilted doors and deformed windows; or the partially or fully charred chassis of cars in a lot near the World Trade Center complex, most of them also partially melted; or the burning cars surrounded by paper that somehow doesn't burn; or the fire truck with a blown out window but inflated tire; or the minivan consumed with a fire that is particularly intense where the engine is; or again the car with fire under it and on it, but not inside it. Even the most skeptical observer of these photos would be prompted to ask: What, if not some Star Wars type laser beam, could cause this unusual destruction and decomposition?

### Steel Turned to Dust

Wood argues that a directed energy weapon pulverized the buildings, turning them into the fine dust that filled the lungs of rescue workers, afflicting them with persistent aerodigestive tract inflammatory syndromes and

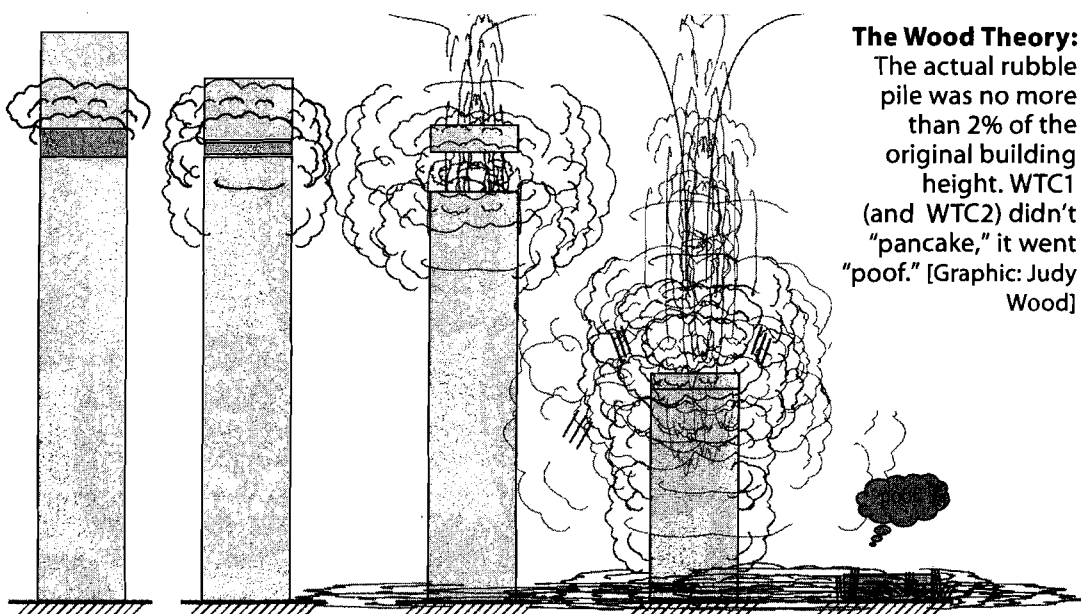
diseases—reactive airways dysfunction syndrome, reactive upper airways dysfunction syndrome, gastroesophageal reflux disease, and inflammatory pulmonary parenchymal syndromes—as well as respiratory tract and nonrespiratory malignancies. In a telephone interview she guided this journalist through the photographs on her website depicting the way the towers erupted like volcanoes with arcing plumes of dust that resembled banana peels; what she calls a "dust fountain bubbler."

Aerial photos show massive clouds enveloping lower Manhattan with "a blizzard of ultra-fine dust," billowing upwards with great density before dissipating little by little into the sky with fumes remaining for days. She points out that during the explosion very little debris is falling—perhaps a few hundred small beams that look like matchsticks next to the tall building—as the entire top of the building has been turned into fine particles. Shots of the street show dust covering the pavement, as well as aluminum cladding and paper, but no steel filing cabinets or other steel office furniture. Wood thinks this dust is the smoking gun of 9/11, describing the process that destroyed the buildings with the neologism "dustification."

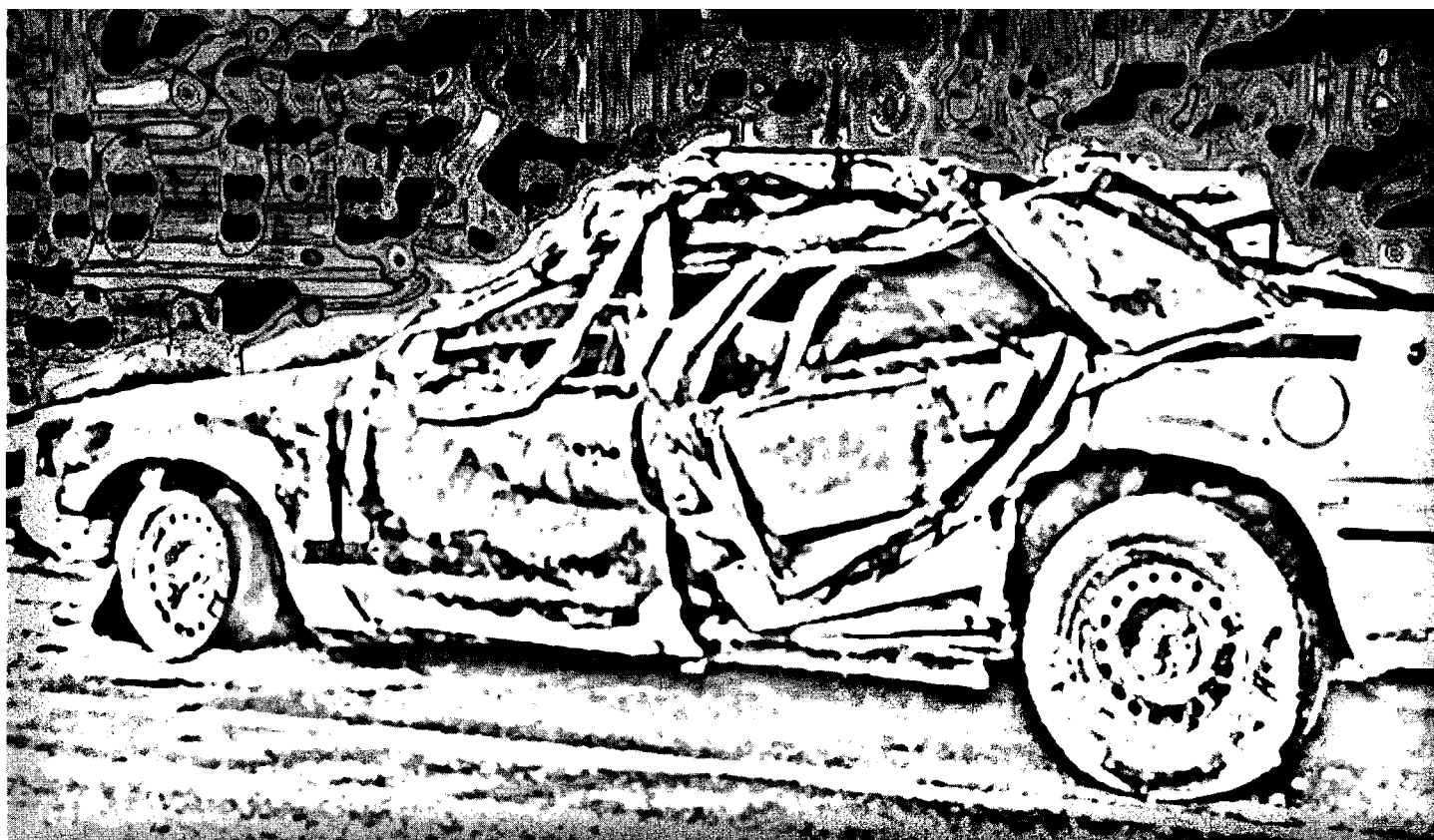
### Undisclosed Conflict of Interest

In a supplement to her RFC, Wood asked NIST to disclose that its contractor in analyzing the destruction of the towers, Applied Research Associates (ARA) of Albuquerque, NM, is a "significant manufacturer of directed energy weapons and/or components thereof" and has "a significant, clear and palpable conflict of interest that adversely affects the quality and integrity of the work done by ARA for NIST." It will be interesting to see if NIST responds to this assertion. As attorney Jerry Leaphart has pointed out in a memo to Wood, not only was ARA a contractor in the cleanup of Ground Zero and in the preparation of NIST's reports, but "ARA is also at the very epicenter of the development of Directed Energy Weapons" as a founding sponsor of the Directed Energy Professional Society (DEPS).

Leaphart quotes from DEPS's inaugural 2000 newsletter *Wave Front* to the effect that airborne tactical lasers and high-altitude airborne lasers are moving from demonstrations to operational capability: "Lasers in space, lasers in the stratosphere, lasers on and over the battlefield—we're at the beginning of an evolutionary new wave of weaponry." Leaphart has been able to pinpoint the Air Force's



**The Wood Theory:**  
The actual rubble pile was no more than 2% of the original building height. WTC1 (and WTC2) didn't "pancake," it went "poof." [Graphic: Judy Wood]



**Toasted Vehicles:** Cars half a mile away from Ground Zero exhibited unusual energy effects: melted doors and deformed windows, missing tires, and extensive front-end damage with little rear damage. Could some type of directed energy weapon have caused this unusual destruction? [<http://janedoe0911.tripod.com/StarWarsBeam5.html#toasted>]

Directed Energy Directorate and the same service's Institute of Technology's Center for Directed Energy as being responsible for developing these high-energy lasers and

**ARA was a contractor in the cleanup of Ground Zero and in the preparation of NIST's reports, and is at the very epicenter of the development of Directed Energy Weapons.**

high-power microwaves, as well as the advanced optics that enable these destructive energies to be projected "at the speed of light anywhere, at any time and with graduated intensity." Leaphart and Wood have sent letters and photos to certain experts in the field and received one reply stating that directed energy weapons caused the destruction of the towers.

#### Final Note

Whereas Wood was cheered at Cooper Union, even garnering spontaneous expressions of love from the audience, many people in the 9/11 Truth Movement are troubled that Wood and her collaborator Morgan Reynolds question whether planes

hit the towers and Pentagon. This concern, which ranges from skepticism to distrust, draws on the case of French author Theirry Meyssan, and others who give indications of being witting or unwitting disinformation artists.

Readers may recall that Meyssan gained worldwide fame for his March 2002 book *L'Effroyable Imposture* (*The Appalling Imposture*), in which the former seminarian turned anti-fascist militant claimed that a plane didn't hit the Pentagon, but rather a missile fired by neo-Nazis who had infiltrated the American military. The book sold well despite the fact that it was discredited in the media as "conspiracy theory." Three months later another book appeared: *L'Effroyable Mensonge* (*The Appalling Lie*) by Guillaume Dasquié and Jean Guisnel. These French intelligence experts revealed that Meyssan had been manipulated for years by government agents, which, according to the anonymous authors of *L'Ultime Razzia: Le 11 Septembre 2001 dans l'histoire* (*The Ultimate Raid: 9-11 in History*), reduced Meyssan to an object of ridicule and served as a warning for others who would question the official version of events.

Perhaps unfortunately for the sake of a free and open, wide-ranging debate, broaching the notion that planes didn't hit the towers or Pentagon is a "third rail" for journalists. Flight 93 was shot down, perhaps with a laser as it too was blown to bits no bigger than a phonebook and scattered over a three-mile area, according to early television news reports that have recently resurfaced. Having seen videos of the planes hitting the towers, and having read and heard eyewitness accounts of the plane flying at high speed

right at the Pentagon, this journalist is likewise skeptical but remains open to alternative information that raises suspicions.

Any account of Judy Wood's views on 9/11 wouldn't be complete without addressing, at least in a cursory way, this highly controversial issue of the planes not hitting the buildings. Readers interested in this topic are referred to Wood's website ([janedoe0911.tripod.com](http://janedoe0911.tripod.com)), where Morgan Reynold's RFC with NIST, primarily questioning the lack deceleration upon impact, can be found under the title "What Planes?"

However, Wood is on more solid ground: 1) when analyzing the destruction of the towers in her RFC, which omits references to the planes; and 2) when challenging NIST to explain its conflict of interest with regard to Applied Research Associates. "Steel turned to dust as literally as the buildings being destroyed before our very eyes," Wood says, adding, "These effects defy explanation other than that of directed energy weapons." **P**

**©2007 Len Bracken.** Len lives in Washington, DC, where he works as a newspaper editor. His nonfiction books include *Guy Debord - Revolutionary*, *The Arch Conspirator*, and *Shadow Government: 9-11 and State Terror*, the latter titles available from **Adventures Unlimited**, (815) 253 6390; his novels can be browsed via **iUniverse.com**.

#### Endnote

1. Judy Wood's Request for Correction is posted at [www.ocio.os.doc.gov/ITPolicyandPrograms/Information\\_Quality/PROD01\\_002619](http://www.ocio.os.doc.gov/ITPolicyandPrograms/Information_Quality/PROD01_002619)

*PARANOIA does not endorse a particular 9/11 theory, and encourages critical analysis of all 9/11 theories.*

## SOLOMON'S KEY:

THE CODIS PROJECT

A Conspiracy Thriller

SEX MAGICK AND THE MOONCHILDE...

THE ULTIMATE CONSPIRACY: A MASONIC NEXUS OF EVIL

On the anniversary of their downfall at the hands of the papacy, the Knights Templar vow revenge.

The ultimate spies and the ultimate threat: Reunited lovers brought together by fate, Italian Secret Service agent Nick Rossi and beautiful Mossad agent, Josie Schulman, battle an al-Qaeda orchestrated wave of terrorist attacks directed against Rome, the Vatican, and the newly elected Pope. But the investigation means plunging into Rossi's own past and into the arms of Bast, the alluring stranger, who may be his downfall.

The ultimate secret: Beneath the Dome of the Rock, in Solomon's Temple, an ancient scroll is found. It unlocks the Holy See's brutally suppressed truth concerning the divine feminine, Mary Magdalene's true identity and role -- and the location of history's most important tomb.

The ultimate deception: As world leaders converge on Rome for the Pope's funeral, Rossi and Josie race against time and follow a cryptic trail of symbols hidden within German Renaissance paintings: the keys to a mystery that points to a secret Masonic nexus of power, the secrets of the Widow's Son. The climax culminates in a turned, rogue agent's attack upon the Vatican itself, during the Pope's funeral.

**R. DOUGLAS  
WEBER**

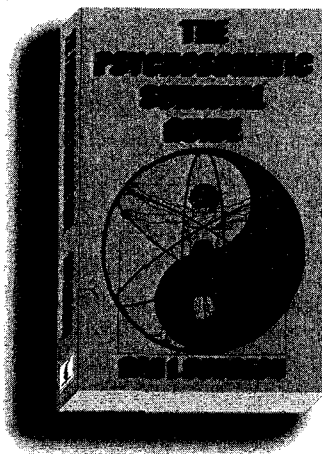
ISBN 9545857366

Available at: [Amazon.com](http://Amazon.com)

## Life on Planet Earth is laden with Conspirators, Tyrants, and Oppressors

The rest of us just want to get through  
without too much trouble

**The Psychosomatic Survival Guide**  
will show you how to avoid the insanity  
and engage you with entertaining advice



[www.daggerhandle.net](http://www.daggerhandle.net)  
[www.amazon.com](http://www.amazon.com)

NOTE

## Could the Bees Bring Us to Our Knees?

A mysterious killer is wiping out honey bees in a major threat to the world's food supply. Colony Collapse Disorder (CCD) occurs when a hive's inhabitants suddenly disappear, leaving only queens, eggs and a few young worker bees. The new phenomenon, which began in the U.S. in the fall of 2006, is now worldwide. Researchers have found no single cause, but studies have revealed a large number of disease organisms. The top suspects are parasites, mites, viruses, bacteria, pesticides, or a combination of the above. Extreme climate changes may also be a factor. British scientists have suggested that radiation from mobile phones might interfere with the bees' navigation systems, and environmentalists have speculated that satellite transmissions and/or ionospheric heating by the U.S. military (HAARP) are responsible for the devastation.

A Penn State University entomologist has stated, "One operation after another is collapsing." Other sources have noted that 90% of the wild bee population in the U.S. has died out, and bee species are declining or have become extinct in Britain. Significantly, bees do more than make honey. About 1/3 of our diet comes from insect-pollinated plants, and the honeybee is responsible for 80 percent of that pollination, according to the U.S. Department of Agriculture. If the bees continue to die off, the crops they support will die too, and major economic disruption and possible famine will follow.

As if to underscore the import of this matter, Albert Einstein once said, "If the bee disappeared off the surface of the globe, man would only have four years left to live." If the bees don't come back, the situation could bring us to our knees. [*The Independent*, "Are mobile phones wiping out our bees?", April 15, 2007]