

**DR. JUDY WOOD.**

Clemson, SC 29631

[lisajudy@nctv.com](mailto:lisajudy@nctv.com)

August 22, 2007

VIA EMAIL AND CERTIFIED MAIL RRR

Deputy Director

National Institute of Standards and Technology

100 Bureau Drive, Mail Stop 1000

Gaithersburg, MD 20899-1000

Email: [info.quality@nist.gov](mailto:info.quality@nist.gov)

Re: APPEAL of NIST initial denial dated July 27, 2007

a.

Appeal filed by: Dr. Judy Wood,

b.

Annexed hereto, please find Request for Correction (RFC) dated March 16, 2007; RFC Supplement #1 March 29, 2007; and RFC Supplement #2 dated April 20, 2007.

c.

Statement of reasons why the initial denial was in error are:

I. Overview

Firstly, I should like to acknowledge that NIST's review of my RFC of March 16, 2007 and the two Supplements thereto of March 29, 2007 and April 20, 2007, (hereinafter RFC&Supps) comports with the requirements of Section 515 of P.L. 106-544 in terms of the procedures that are required; and, for that, I should like to express gratitude.

Secondly, however, based on the factors that are articulated below, this appeal will demonstrate that:

- a. NIST should not have reached the conclusion that it would initially deny my request for correction; and
- b. NIST should, indeed, retract the NCSTAR 1 report; and
- c. NIST should acknowledge the evidence presented confirms that the NCSTAR 1 report is, indeed, fraudulent.

The evidence already presented, together with that which this appeal additionally brings forward will confirm that:

A.

NIST should have known that Applied Research Associates (ARA) is a “significant manufacturer of directed energy weapons and/or components thereof;” and

B.

NIST and its contractors, such as ARA, should have detected evidence of the use of exotic weaponry even in the context of NIST’s intentional and, I assert, improper limitation of its investigation to “the sequence of events leading up to the collapse of the World Trade Center (WTC) towers.”

C.

NIST should, at a bare minimum, modify NCSTAR 1 to include the definition of “collapse.”

D.

As NCSTAR 1 merely offered a “probable [hypothetical] ‘collapse’ sequence” [or properly speaking, hypothetical destruction sequence] purporting to explain the sequence of events leading up to the ‘collapse’ of the WTC towers,” NIST should modify the stated objective of NCSTAR 1 by deleting the claim that it was seeking determine why and how WTC 1 and WTC 2 ‘collapsed’ following the initial impacts of the aircraft...” Had NIST determined why and how WTC 1 and WTC 2 were destroyed, it would necessarily have had to deal with the following phenomena that are visually confirmed to have occurred during two separate and discrete time intervals.

E.

NIST’s analysis did not satisfy either the momentum or the energy conservation principles. Further, NIST’s reliance on the technical topic reports, including NCSTAR 1-2A, 1-2B and NCSTAR 1-5 and 1-6 utterly misconstrue the visual evidence as should have been obvious to an entity having the weapons detection capabilities of ARA. That capacity and the evidence that should have been detected as a result of that capacity will be fully supported herein below.

F.

NIST can confirm that directed energy weapons have been used by making inquiries at the Directed Energy Directorate, as I have done, and by calling in ARA and SAIC witnesses, together with the First Responders, such as Patricia Ondrovic.

## II. Substantiation of assertions A through E.

A.

**NIST should have known that Applied Research Associates (ARA) is a “significant manufacturer of directed energy weapons and/or components thereof.”**

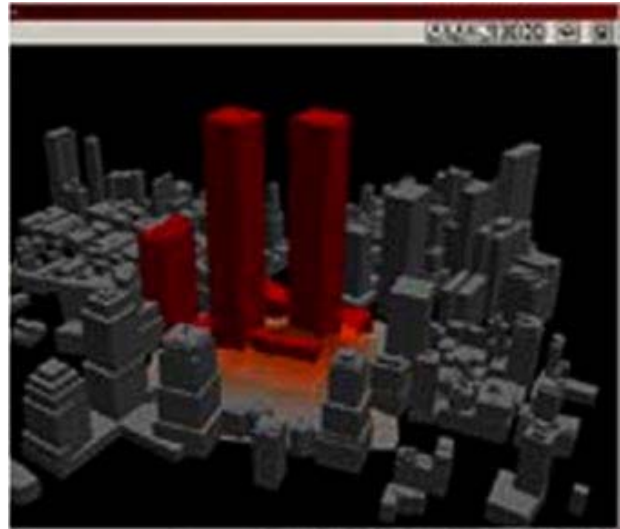
As indicated at the outset, NIST’s treatment of my RFC/Supps is to be accredited for following the requisite procedures. One example of this is NIST’s statement in the initial denial letter of July 27, 2007

that “[p]rior to award, each NIST WTC Investigation Contractor underwent a rigorous organizational conflict of interest analysis. As a result of the analysis, ARA was determined not to have an organizational conflict of interest.” NIST then goes further to claim that “...there is no factual evidence to support this claim [that ARA is a significant manufacturer of directed energy weapons and/or components thereof].”

That statement simply cannot withstand even a modicum of scrutiny of ARA's known weapons manufacturing capacity and knowledge of the lethality effects of advanced weapons.



**Figure 1(a).** [source](#) *defens1\_poof\_1.jpg*



**Figure 1(b).** [source](#) *sec\_1\_lwtc.jpg*

ARA should have been asked to state which of their capacities are displayed in connection with the two simulations above depicted. In the one instance, it looks as if they are displaying a capacity to bring about destruction of an urban setting that is similar to the World Trade Center complex; and, in the other, it looks as if they are depicting a capacity to make the World Trade Center glow orange before disappearing.

The building in the background of Figure 1(a) resembles WTC3, the Marriott Hotel, as if we were looking south down West Street, with the WFC on our right (out of view). See the building in the foreground of Figures 3 and 4



**Figure 2.** [source1](#) and [source2](#) *OKC\_DEW450.jpg*



**Figure 3.** [source](#) *Image523.jpg*



**Figure 4.** [source](#) *site1082\_ph.jpg*



**Figure 5.** [source](#) *Image557.jpg*

One photograph in Figure 2 is of the inside of WTC6 and the other is the Murrah Building in OKC. Can you tell which is which? (Hint: one of them has a wheatchex at the bottom.) The point here is that

weapons expertise of the type that ARA has is used for assessing the cause of the destruction seen. ARA knows how to do that sort of assessment; and, for that reason, it is indicative of fraud for ARA to have given input into a process that found it appropriate to stop the entire analysis of what caused the destruction of the WTC towers at a point that did not involve assessment of the effects seen above.

Let me be clearer still. It is incongruent for NIST to have stated, as it did, that the effects seen above are inevitable without so much as a single sentence of explanation of the seen and observed effects.

Figure 3 is a reminder of the material that must be accounted for in the rubble pile.

Figure 4 shows WTC3 on the morning of 9/11

Figure 5 shows the destruction of WTC1 viewed from the north-northwest



**Figure 6.** source ARA their capabilities [source](#) [defens1.jpg](#)

The above depictions clearly illustrate a degree of involvement by ARA with a wide variety of advanced weaponry:

- a) They design/manufacture missiles.
- b) They design/manufacture radio-controlled flying objects that fly and spy and/or perhaps fly in secretly to deliver some biological agent.
- c) They design/manufacture nukes and/or some other type of weapon of mass destruction (WMD).
- d) They anticipate working in a toxic environment and plan for it.
- e) They can destroy tall buildings with little damage to untargeted neighboring structures.
- f) They design/manufacture all-terrain robots to seek and destroy anybody and anything.

Now that ARA's overall capabilities have been demonstrated, we come now to what should have been a determining factor for NIST to know that ARA had a clear and palpable conflict of interest and should

never have been allowed to participate in the preparation of NCSTAR 1. That is because ARA's primary capabilities involve the study of lethality and destructive effects caused by weaponry. Here is how ARA, itself, describes its "company-wide initiative":

Quoting ARA:

**Vulnerability/Lethality Center of Excellence**

[http://www.ara.com/capabilities/p\\_VulnerabilityLethalityExcellence.htm](http://www.ara.com/capabilities/p_VulnerabilityLethalityExcellence.htm)

**Problem Statement and Objectives**

The Vulnerability/Lethality Center of Excellence is an ARA company-wide initiative to coordinate the efforts of ARA's professional engineering and scientific staff working in the areas of research, development, testing acquisition and maintenance of conventional munitions.

\* Target Vulnerability analyses are performed to evaluate the susceptibility of targets to damage inflicted by our munitions.

\* Weapon Effectiveness is the mathematical/ analytical combination of the weapon lethality and system delivery accuracy. The warhead lethality is a detailed analysis of the interaction of the warhead damage mechanism and a detailed target description.

**Results and Benefits**

Extensive background in providing modeling, simulation, and statistical analysis in analytical and empirical process environments to both government and commercial entities. To support our areas of interest, we maintain a professional staff of highly qualified engineers and scientists with the educational and experience background necessary to support the objectives of our customers.

**Weapon Effects**

ARA develops models and software to simulate the extreme environments created by conventional blast, chemical, biological, and nuclear weapons. We model the physics of the weapon, the environments created by the weapon, and the effect of these environments on humans and man-made objects. Man-made objects include fixed and mobile structures, military and commercial structures, above-ground and buried structures.

We apply our full spectrum CBRNE (chemical, biological, radiological, nuclear, explosives) effects expertise for trade studies, analysis of alternatives, weapon system design, operational planning, targeting, design of protective structures, design of protective equipment and training simulators. We provide direct support services as well as software products enabling others to perform these analyses.



## Federal Contract Vehicles

<http://www.ara.com/about/contracts.htm>

Quoting ARA:

ARA has signed a number of major task-order contracts with the Federal government. Please contact us if you are interested in more information in the following contracts.

Quoting ARA:

<b>Technology Directorate's Program for Arms Control, Nonproliferation, Homeland Defense, and Chemical/Biological Weapons Defense (TDA IDIQ)</b>
--

<b>Contract:</b> DTRA01-02-0066
---------------------------------

<b>Scope:</b> Arms Control, Nonporliferation, DTRA
--

<b>Period of Performance:</b> Active thru August 2007 + 5 Year option
---

<b>Contact:</b> Terry Schechinger (919) 876-0018
--

<b>Test Operations, Technology and Test Support (TOTTS)</b>
---

<b>Contract:</b> DTRA02-03-D-0002
-----------------------------------

<b>Scope:</b> This contract is the principal contract providing relevant field test support for DTRA/TDT.
---

<b>Period of Performance:</b> Active thru April 2008 + 5 year option
--

<b>Contact:</b> Robert Couch (505) 846-0487
---

<b>Weapons of Mass Destruction-Defeat Technology (WMD-DT IDIQ)</b>
--

<b>Contract:</b> DTRA01-03-D-0014
-----------------------------------

<b>Scope:</b> Purpose is to support all present and future DTRA Counter WMD Technologies Directorate (CX) activities. These activities include supporting other DTRA directorates and providing operational support to the Combatant Commanders and their staffs. Additionally, the scope also includes supporting other federal, state and local government activities. Orders issued pursuant to this contract may be placed by Federal Agencies other than DTRA. Federal Agencies other than DTRA desiring to place orders under this contract shall contact the DTRA Contracting Officer, Ms. Kathryn Cooper,(703) 767-3503, for prior approval. This approval shall be obtained for each order.
--

<b>Period of Performance:</b> Active thru May 2008 + 5 year option
--

<b>Contact:</b> Rob Sues (703) 329-0200
---

To repeat, "**Weapons of Mass Destruction-Defeat Technology (WMD-DT IDIQ)**" and "Purpose is to support all present and future DTRA Counter WMD Technologies Directorate (CX) activities." Presumably ARA was chosen for this contract because it is a leading firm in WMD technologies. Obviously ARA has expertise is all WMD technologies.

ARA supports DTRA research and development. The Defense Threat Reduction Agency (DTRA)



**Figure 7.** source (source) [http://www.dtra.mil/newsservices/photo\\_library/RD/popup/RD36.cfm](http://www.dtra.mil/newsservices/photo_library/RD/popup/RD36.cfm) Photo source cp061.JPG



**Figure 8.** source (source) [http://www.dtra.mil/newsservices/photo\\_library/RD/popup/RD30.cfm](http://www.dtra.mil/newsservices/photo_library/RD/popup/RD30.cfm) Photo source cp301.JPG

**DTRA** Research and Development. Concrete for test structures is mixed at the batch plant at the U.S. Army White Sands Missile Range, N.M.

**DTRA** Research and Development. The Defense Threat Reduction Agency (DTRA) uses the Component Test Structure-1 (CTS-1), located at the DTRA Permanent High Explosive Test Site at the U.S. Army White Sands Missile Range, N.M., to test various weapons effects (photo depicts debris resulting from a test).

## Weapon Systems

[http://www.ara.com/capabilities/c\\_weapon\\_systems.htm](http://www.ara.com/capabilities/c_weapon_systems.htm)



**Figure 9.** source [http://www.ara.com/capabilities/images/c\\_weapon\\_systems.jpg](http://www.ara.com/capabilities/images/c_weapon_systems.jpg) c\_weapon\_systems.jpg

*Quoting ARA:*

## Weapon Systems

ARA develops advanced weapon system concepts and designs that expand performance ranges as well as leverage advanced technologies to increase targeting precision and on-board autonomy. We develop weapon systems with enhanced survivability, penetration depth, range, and explosive performance. We also develop advanced non-lethal and lethal concepts and designs that make weapon systems smarter and limit collateral damage. We integrate weapons and advanced robotic systems that can infiltrate denied sites and maximize the reach of our warfighters

We use high fidelity physics-based modeling and simulation methods to perform weapons effectiveness evaluations to engineer these solutions and optimize effectiveness considering all system requirements. We also design and execute tests of new weapon systems for development as well as operational evaluations.

## Weapon Effects

[http://www.ara.com/capabilities/c\\_weapon\\_effectiveness.htm](http://www.ara.com/capabilities/c_weapon_effectiveness.htm)



**Figure 10.** [source http://www.ara.com/capabilities/images/c\\_weapon\\_effects.jpg](http://www.ara.com/capabilities/images/c_weapon_effects.jpg) [c\\_weapon\\_effects.jpg](#)

## Weapon Effects

*Quoting ARA:*

ARA develops models and software to simulate the extreme environments created by conventional blast, chemical, biological, and nuclear weapons. We model the physics of the weapon, the environments created by the weapon, and the effect of these environments on humans and man-made objects. Man-made objects include fixed and mobile structures, military and commercial structures, above-ground and buried structures.

We apply our full spectrum CBRNE (chemical, biological, radiological, nuclear, explosives) effects expertise for trade studies, analysis of alternatives, weapon system design, operational planning, targeting, design of protective structures, design of protective equipment and training simulators. We provide direct support services as well as software products enabling others to perform these analyses.

Confirmation of ARA's central role in directed energy weapons technology is confirmed by their role as a silver level founding sponsor, in 1999, of the Directed Energy Professional Society (DEPS). Not much else can be specifically stated about ARA's manufacturing involvement in directed energy weaponry largely because information about the deployment of such weapons remains shrouded in secrecy.

In the year 2000, DEPS stated in its internal publication *Wave Front* that such weapons were already deployed in a variety of platforms, implying that they were already then deployed in space, aboard high and low altitude aircraft, on the ground and at sea. Moreover, such weapons had a wide range of lethal effects.

ARA also has an internal publication that is entitled *Waves* that makes reference to the development of "advanced or unusual" weapons concepts, but says nothing more specific than that.





## DIRECTED ENERGY PROFESSIONAL SOCIETY

### DEPS Sponsors

[DEPS Home](#)[Events](#)[Education](#)[Publications](#)[DEPS Info](#)[Links](#)

DEPS is supported by its Sponsors, organizations that provide valuable institutional guidance and support. DEPS owes a great debt of gratitude to its Founding Sponsors as well as its current Sponsors. Note: These links take you outside the DEPS web site, and the content is beyond our control.

#### Current DEPS Sponsors

##### Gold Sponsors

- [Boeing - Missile Defense Systems](#)
- [IONATRON, Inc.](#)
- [Lockheed Martin](#)
- [Northrop Grumman](#)
- [Raytheon](#)
- [Textron Systems Corporation](#)

##### Silver Sponsors

- [MZA Associates Corporation](#)
- [Nutronics](#)
- [the Optical Sciences Company](#)
- [Schafer Corporation](#)
- [Science Applications International Corp.](#)

##### Sustaining Sponsors

- [Applied Technology Associates](#)
- [Brashear, a Division of L-3 Communications](#)
- [Georgia Tech Research Institute](#)
- [Hamilton Sundstrand](#)

#### Founding Sponsors

We thank our founding sponsors for their help in making DEPS a reality.

##### Gold Level Founding Sponsors

- [Boeing - Airborne Laser Program](#)
- [Lockheed Martin](#)
- [Raytheon](#)
- [TRW](#)

##### Silver Level Founding Sponsors

- [Applied Research Associates, Inc.](#)
- [MZA Associates Corporation](#)
- [BAE Systems](#)
- [the Optical Sciences Company](#)
- [SVS](#)
- [Schafer Corporation](#)

##### Founding Sponsors

- [The University of New Mexico](#)

DEPS Information

8/20/07 12:42 PM



## DIRECTED ENERGY PROFESSIONAL SOCIETY

### About DEPS

[DEPS Home](#)[Events](#)[Education](#)[Publications](#)[DEPS Info](#)[Links](#)

**DEPS Mission:** The Directed Energy Professional Society (DEPS) was founded in 1999 to foster research and development of Directed Energy (DE) technology for national defense and civil applications through professional communication and education. We intend to be recognized as the premier organization for exchanging information about and advocating research, development and application of Directed Energy.

#### Our Goals

- Encourage national interest in DE
- Foster communication within the DE community
- Enhance DE education
- Recognize outstanding DE contributions
- Publish and archive DE achievements

#### Our Activities

- Sponsoring
  - DE Symposia, Conferences and Workshops
  - DE Short Courses
- Recognizing
  - Excellent DE papers
  - Contributions of DEPS Fellows
- Publishing
  - Journal of Directed Energy
  - DE Symposium, Conference and Workshop Proceedings

Figure 11. DEPS sponsors: <http://www.deps.org/DEPSpages/sponsors.html>

DEPS information: <http://www.deps.org/DEPSpages/DEPSinfo.html>

## ARA Facilities

[http://www.ara.com/offices/facility\\_manufacturing.htm](http://www.ara.com/offices/facility_manufacturing.htm)

ARA manufacturing facility

### Vermont Manufacturing/Prototyping Facility



**Figure 12.** [source](#) manufacturing\_vermont.jpg

### Vermont Manufacturing/Prototyping Facility

Randolph, VT, 63,000 sq. ft. plant on 57 acres

*Quoting ARA:*

ARA's manufacturing/prototyping facility located in Randolph, Vermont brings ARA-developed technologies to the field. Our facilities include 63,000 square feet of manufacturing space on 57 acres, including a machine shop, electronics shops, two large bays for fabrication of large builds, inventory space, and office space.

Our in-house capabilities, including electronic and mechanical assembly, CNC lathing and other machining, welding, quality assurance, and inventory control, allow us to be responsive to each customer's requirements and provide top quality products.

Our staff includes mechanical designers, electronics technicians, fabricators, and accounting, procurement, and inventory control personnel. A major strength of our manufacturing group is their ability to draw on the diverse set of skills that exist across ARA.

Products manufactured at this facility include:

- \* [Robotics](#) product lines - platforms are available with a variety of implements for performance of EOD tasks. With units deployed worldwide, ARA robotics have proven performance in the most challenging environments.

- \* Our [geotechnical and environmental](#) product lines include rigs and tools including patented sensors and machines to meet a variety of geotechnical/environmental needs.

## Emerald Coast Manufacturing/Prototyping Facility



**Figure 13.** source [http://www.ara.com/offices/mfg\\_fl.jpg](http://www.ara.com/offices/mfg_fl.jpg) manufacturing\_niceville.jpg

## Emerald Coast Manufacturing/Prototyping Facility

Niceville, FL, 4,000 sq.ft

Quoting ARA:

ARA's Emerald Coast Facility consists of a central office complex, a laboratory and a manufacturing facility. This facility is a DoD-approved Top Secret facility with storage capability up to and including Secret level.

The 4000 sq. ft laboratory supports R&D, prototyping, electronics assembly, quality assurance, procurement, inventory control and production. It is equipped with state-of-the-art electronic test equipment such as network analyzers, frequency analyzers, and oscilloscopes, along with the necessary equipment for electronics assembly, production, and quality assurance. Product components are controlled in a staffed inventory room and climate controlled storage is provided by the lab until products are delivered.

The 4000 sq. ft. manufacturing facility is designed for production. This facility is used for LRIP and also serves as a backup to our [Vermont manufacturing facility](#) during FRP. The Emerald Coast manufacturing and development facility provides space for production and inventory as well as spiral developments and horizontal technical insertions. It includes an assembly line, a testing/QA area, a controlled inventory room, and a laboratory. Like the office complex, the facility meets DoD 5200.22-M NISPOM requirements and DCID6/9 standards. There are several office rooms in the facility approved for processing and storing of classified material and a secure telephone.

### **Comments:**

"This facility is a DoD-approved **Top Secret facility with storage capability** up to and including Secret level." [Emphasis added]

A DoD-approved Top Secret storage facility does not appear to be for just R&D prototyping. This appears to be a storage facility where the product is available upon demand.

"Product components are controlled in a **staffed inventory room** and **climate controlled storage** is provided by the lab **until products are delivered.**" [Emphasis added]

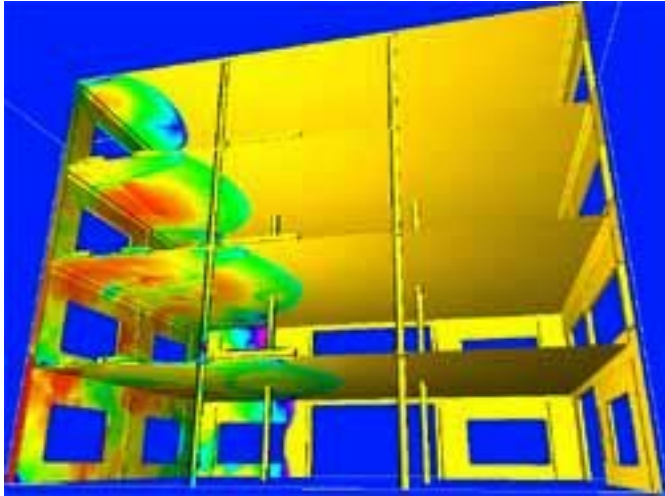
A staffed inventory room with climate-controlled storage for storing products until they are delivered implies this is manufacturing, not just R&D prototyping.



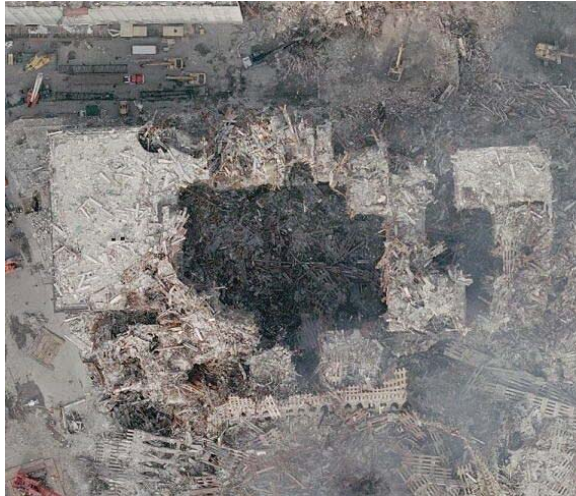
## Airblast Short Course

[http://www.ara.com/products/seminar\\_airblast.htm](http://www.ara.com/products/seminar_airblast.htm)

Cookie-cutter cutouts?



**Figure 14.** [source](#) airblast5.jpg



**Figure 15.** [source http://www.noaa.gov/news/stories/images/wtc-photo-cropped.jpg](http://www.noaa.gov/news/stories/images/wtc-photo-cropped.jpg)



**Figure 16.** [Source1](#) and [source2](#) OKC\_DEW450.jpg

The building in the background reminds me of WTC3, as if we are looking down West Street, with the WFC to our right.

Quoting ARA:

### Airblast Short Course

#### Summary

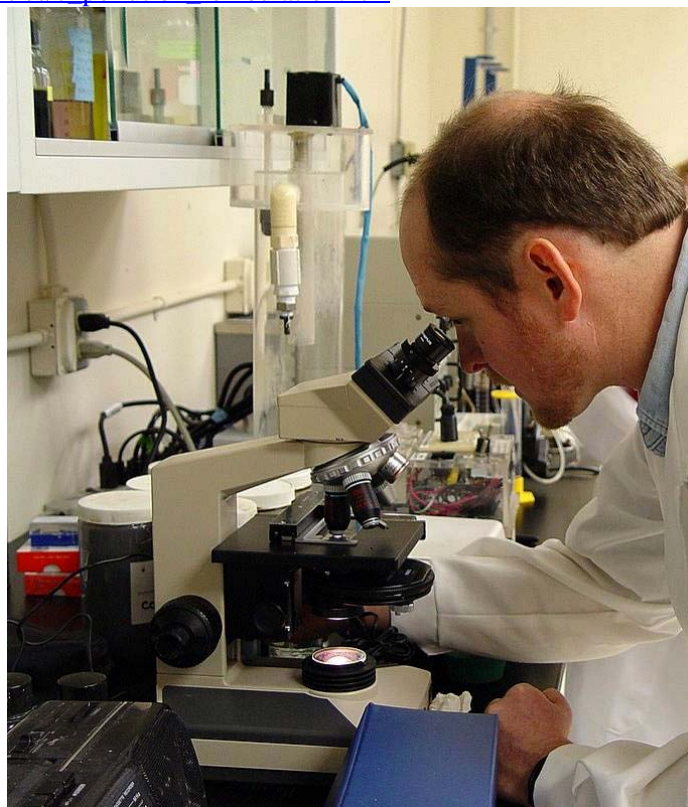
This course is designed to provide wide-ranging exposure to the fields of airblast, high explosives, detonation waves, and fragmentation and subsequent loads on structures with examples for conventional munitions and shock tubes. It will include a section on hydrodynamic codes and blast modeling and a session on blast wave reflection. Different tools will be presented to analyze the response of structures to these loads. This course is intended to be an introduction

to these phenomena and their relationships to each other.

**Comment:** If ARA is teaching a short course in "the fields of airblast, high explosives, detonation waves, and fragmentation and subsequent loads on structures," it follows that they understand and recognize the effects of this technology under any and all circumstances. They failed to do so in the NIST WTC study. ARA and other contractors that knew or should have known the cause of the destruction of the WTC towers fraudulently steered NIST away from the information confirming that exotic weaponry, almost certainly including directed energy weapons, were used to bring about the destruction of the WTC complex.

### Environmental Treatment Process Development and Testing

[http://www.ara.com/capabilities/c\\_pollution\\_remediation.htm](http://www.ara.com/capabilities/c_pollution_remediation.htm)



**Figure 17.** [source http://www.ara.com/capabilities/images/pollution.jpg](http://www.ara.com/capabilities/images/pollution.jpg) *pollution.jpg*

**Comment:** ARA key staff members probably know what molecular dissociation looks like.

Quoting ARA:

[Environmental Treatment Process Development and Testing](http://www.ara.com/capabilities/c_pollution_remediation.htm)

ARA owns and operates a 20,000 sq. ft facility in Panama City, FL. Facilities include a microbial biodegradation laboratory with wet chemistry and media preparation capabilities, an analytical laboratory, and a fabrication and demonstration high bay. The laboratories are equipped to conduct biodegradation testing, ion exchange resin testing and regeneration, thermal treatment, catalytic evaluations, and supercritical and hydrothermal oxidation testing. The analytical laboratory is equipped with a Dionex DX-500 Ion Chromatography, an HP Series 1100 HPLC, an HP 5890 Series II GC, an HP 6890 GC with MS, and necessary support equipment. Key capabilities include:

\* Laboratory through pilot-scale equipment for biodegradation



- \* (2.5 liter through 300-gallon reactor vessels), ion exchange, and hydrothermal testing
- \* Shop-fabricated components and pilot systems
- \* Transportable, trailer-mounted treatment systems for biodegradation and ion exchange
- \* Laboratory and field-test engineering and technician support
- \* Design, engineering, startup, and operational support
- \* Owner-operated and lease options for commercial treatment systems

## Environmental Effects and Cleanup

### *Fuming, Fuzzballs, and Fuzzyblobs*



**Figure 18.** (9/11/01) [Source http://memory.loc.gov/service/ppp/ppmsca/02100/02150v.jpg](http://memory.loc.gov/service/ppp/ppmsca/02100/02150v.jpg) 02150v.jpg

The picture above shows GZ FDNY emergency workers in various stages of ill health from the after effect of the destruction of the WTC. There are unusual "fuzzyblobs" visible in various locations in this photograph. A plausible interpretation is that these fuzzyblobs have a toxic effect on humans, for example, one emergency worker is slumped over and another is holding his nose. It is also noticeable that the trees don't have leaves. A building "collapse" does not cause these effects.



**Figure 19.** (9/11/01) [Source](#) imdf11092001221934a.jpg

The vehicles in the above photo are "fuming." They don't appear to be on fire, yet "fumes" are emanating from them. A reported 1400 vehicles were damaged on 9/11 [Reference1]. These vehicles had peculiar patterns of damage and some were as far away as FDR Drive (about 7 blocks from the WTC, along the East River). Vehicles had missing door handles for example, windows blown out, window frames deformed, melted engine blocks, steel-belted tires with only the steel belts left, and vehicle front ends destroyed with little or no effect on the back end of the vehicles. What could have caused such extraordinary damage? Portions of cars burned while paper nearby did not.

Reference1:

[http://www.apwa.net/Publications/Reporter/ReporterOnline/index.asp?DISPLAY=ISSUE&ISSUE\\_DATE=032004&ARTICLE\\_NUMBER=770](http://www.apwa.net/Publications/Reporter/ReporterOnline/index.asp?DISPLAY=ISSUE&ISSUE_DATE=032004&ARTICLE_NUMBER=770)



**Figure 20.** Source: <http://911wtc.freehostia.com/gallery/originalimages/GJS-WTC80.jpg> GJS-WTC080.jpg

This is during the destruction of WTC1. The cloud wave has not yet passed the building in the foreground, yet vigorous fuming can be seen to the left of the building, ahead of the dust cloud.





**Figure 21.** (9/11/01) [Source](#) 0076v.jpg



**Figure 22.** (9/11/01) [Source](#) Tricia Meadows/Globe Photos m15a.jpg

The toasted car lot burns. Curiously, it's upwind from the WTC shortly after the destruction of WTC1. Most of the dust appears to have settled out of the air. However, very fine dust can be seen around the feet of people walking in this dust. "Fuzz balls" form around their feet.



**Figure 23.** (9/11/01) [Source](#) 0131v.jpg

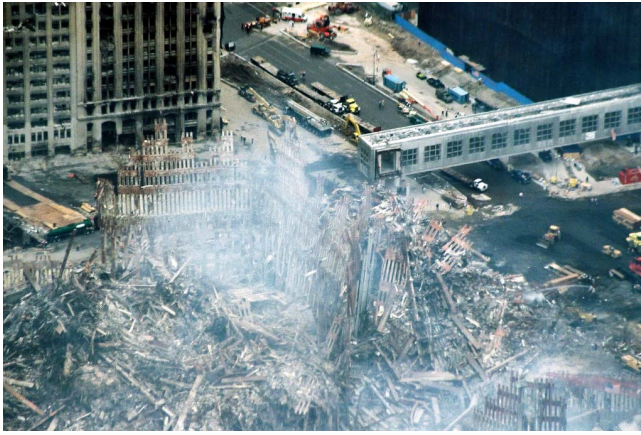


**Figure 24.** (9/14/01) [Source](#) 3897.jpg

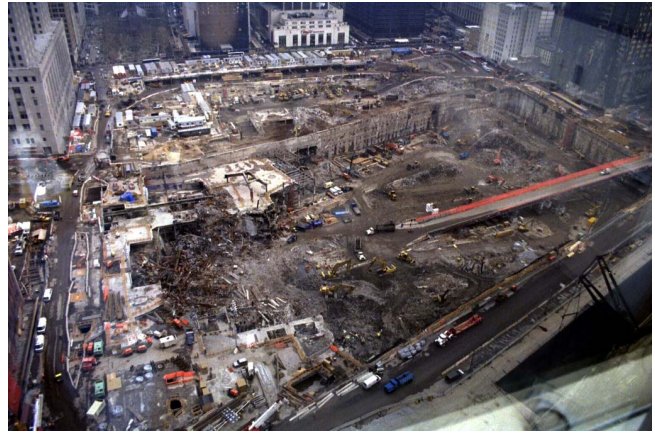


**Figure 25.** (9/14/01) [Source](#) 3901.jpg

The first figure above, looking south toward the pedestrian walkway shows dramatic fuming on 9/11/01. The next two photos, taken of that same area three days later, shows a tremendous amount of dirt added. ARA should know why this dirt is here.



**Figure 26.** (9/27/01) [Source Image313.jpg](#)



**Figure 27.** (photo filed 3/15/02) [Source Image304.jpg](#)

The above photo shows highly visible fuming over the WTC site on 9/27/01. In March 2002, the remains of the dirt pile were still fuming and being hosed down, as can be seen in the second photo above.



**Figure 28.** (??/??/01) [Source http://www.hybrideb.com/source/eyewitness/nyartlab/DSC08057.jpg](http://www.hybrideb.com/source/eyewitness/nyartlab/DSC08057.jpg) 57\_hosedStreet\_DSC08057.jpg

The street near the WTC were cleaned and repeatedly scrubbed almost immediately after the event. ARA has environmental cleanup toxic material handling expertise. They should know why this scrubbing was done.



## *Dirt*



**Figure 29.** (9/16/01) [source 5320.jpg](#)



**Figure 30.** (9/16/01 entered) [Source 5321.jpg](#)

This appears to be a method of environmental cleanup that was used, here. NIST and their contractors should have researched who ordered the new potting soil for the front yard of the WFC.

It looks silly to have this dirt dumped on the fire truck and in the fire truck and under the fire truck. Clearly it didn't suffer from an out-of-control fire in these places. The paint above the tire does not look heat affected.



**Figure 31.** (9/13/01) [Source 5313.jpg](#)



**Figure 32.** (9/13/01) [source 3885.jpg](#)

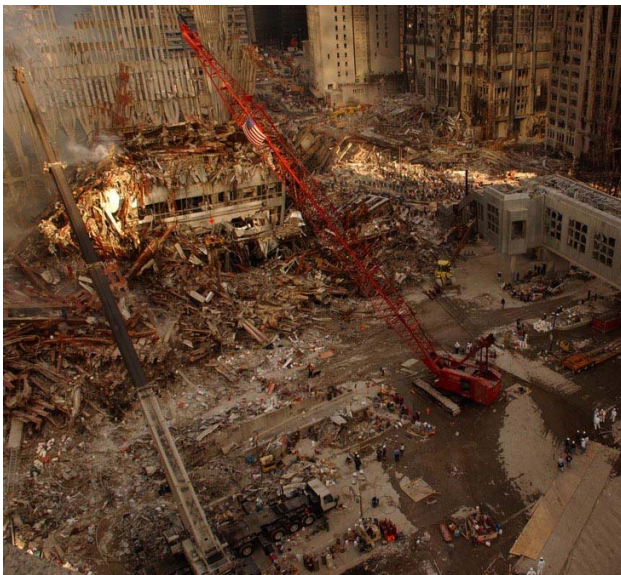
The WTC plaza level had been covered with cement blocks before 9/11, and the above photo dated 9/13/01 shows it covered with dirt. A "collapse" does not cause a building to turn into dirt and ARA should know this.

The second photo above shows what appears to be dirt trucked in from a landfill.





**Figure 33.** (9/11/01) *source* <http://memory.loc.gov/service/ppnp/ppmsca/02100/02110v.jpg> 02110v\_c.jpg (cut)



**Figure 34.** (9/16/01) *Source*  
<http://www.photolibrary.fema.gov/photodata/original/3925.jpg> 3925\_c1.jpg



**Figure 35.** (10/05/01) *Source*  
<http://www.photolibrary.fema.gov/photodata/original/5707.jpg> 011005\_5707\_c1.jpg (cut)

(9/11/01)

(9/16/01) 5 days after 9/11

(10/05/01) 24 days after 9/11

During the first few weeks of the "clean up" operation the amount of dirt appears to have grown.





**Figure 36.** (10/3/01) [source: http://www.parrhesia.com/wtc/wtc070.jpg](http://www.parrhesia.com/wtc/wtc070.jpg) wtc070.jpg

(10/03/01) 22 days after 9/11

Despite all of the many truckloads of dirt dumped on the core of WTC1, it still fumes. This photo was taken on 10/3/01.



**Figure 37.** (10/28/01) [Source](#) 5508\_s.jpg

(10/03/01) 22 days after 9/11

(10/28/01) 47 days after 9/11



**Figure 38.** (10/28/01) [Source](#) 011028\_5509c.jpg

On 10/28/01 there is still fuming from the wet dirt pile. Note the puddle in the foreground. There are pools of water under a beautiful rainbow! Those orange-rusted core columns are very bright.

## *Rudi Giuliani's "120 dump trucks"*



**Figure 39.** Photo [source](#) story\_giuliani.jpg [http://drjudywood.com/media/010912\\_GIulianiDumpTrucks.mp3](http://drjudywood.com/media/010912_GIulianiDumpTrucks.mp3)  
Statement (9/12/01) [Source](#)

*"We were able to move 120 dump trucks out of the city last night. (So) it should give you a sense of the work that was done over night. And so, some of the debris has already been removed. More of it is being removed, and it will be done by barge all throughout the day today."*

On 9/12/01, WCBS radio recorded Rudi Giuliani's following statement:  
[http://drjudywood.com/media/010912\\_GIulianiDumpTrucks.mp3](http://drjudywood.com/media/010912_GIulianiDumpTrucks.mp3)

## *Trucking Dirt In and Out*



**Figure 40.** (9/27/01) [Source](#) 5644.jpg



**Figure 41.** (photo filed 10/13/01) [Source](#) 5450.jpg





**Figure 42.** (9/27/01) [Source](#) 010927\_5644cb.jpg

There is evidence of trucks bringing dirt into lower Manhattan.

## DOT Security Consulting

### Showcase Project

[http://www.ara.com/capabilities/p\\_DOT\\_security.htm](http://www.ara.com/capabilities/p_DOT_security.htm)



**Figure 43.** [source](#) p\_DOT\_security.gif

Quoting ARA:

"The General Services Administration (GSA) managed the design and construction of a build-to-lease project for the Headquarters Building of the Department of Transportation (DOT)."

"Results and Benefits

ARA provided the GSA/DOT the design and installation of electronic and physical security systems to provide the level of protection required by the DOT."

What happened to the DOT camera images of the Pentagon and elsewhere? I think ARA knows.

Does ARA handle the Virginia DOT cameras near the Pentagon? How about those in NYC?



## Capabilities - Homeland Safety and Security

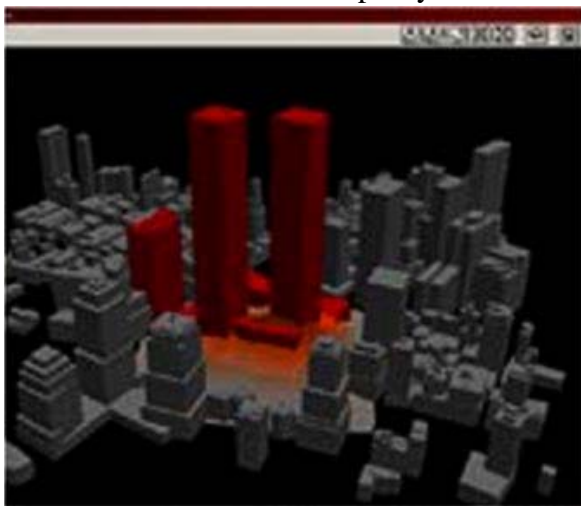
### Technology and systems to protect our citizens

<http://www.ara.com/capabilities/security.htm>



**Figure 44.** [source](#) *sec\_1.jpg*

### Center of Excellence in Weaponry



**Figure 45.** [source](#) *sec\_1\_lwtc.jpg*



**Figure 46.** [Source](#) *Biggart1836.jpg*

ARA shows WTC3 too small. WTC3 was a 22-story building, or one fifth (1/5) of the height of the twin towers and nearly half of the height of WTC7. ARA apparently didn't want to remind us just how tall WTC3 was.

## ARA's PsyOPs Department

Quoting ARA:

### Cognitive Task Analysis

[http://www.ara.com/capabilities/tech\\_cognitive.htm](http://www.ara.com/capabilities/tech_cognitive.htm)

### Crowd Cultures

[http://www.ara.com/capabilities/p\\_crowdculture.htm](http://www.ara.com/capabilities/p_crowdculture.htm)

\* Improve crowd control tactics

Example:

ARA identified the critical cultural elements of Middle Eastern crowds, developed a descriptive model of crowd decision making and behavior across cultures, and developed and evaluated decision-making exercises to support crowd control training for the U.S. military.

## SAIC's PsyOPs Department

### Science Applications International Corporation (SAIC)

<http://sourcewatch.org/index.php?title=SAIC>

Quoting sourcewatch:

**Science Applications International Corporation (SAIC)** was founded in 1969 by **J. Robert Beyster** "and a small group of scientists ... as a scientific consulting firm with a handful of government contracts for nuclear power and **nuclear weapons** effects study programs...."[1]

In 1990 SAIC was indicted and pled guilty to 10 felony counts of fraud on a Superfund site, called "one of the largest (cases) of environmental fraud" in Los Angeles history. [2] SAIC had some 44,000 employees and took in \$8 billion in 2006. SAIC "is larger than the departments of Labor, Energy, and Housing and Urban Development combined," reported *Vanity Fair*. [3] "SAIC's largest customer by far is the U.S. government, which accounts for 69 percent of its business," according to the **Center for Public Integrity**. [4]

### Lost Contract

In July 2006 the U.S. military "removed two firms from a psychological operations contract aimed at influencing international public opinion," reports the *Washington Post*. "The firms, plus a third company (**SYColeman**) that will retain the contract, spent the past year developing prototypes for radio and television spots intended for use in Iraq and in other nations...

### Iraq Work

"SAIC executives have been involved at every stage ... of the war in Iraq," from pushing WMD claims to helping "investigate how American intelligence could have been so disastrously wrong," described *Vanity Fair* in its March 2007 issue. [6] ...

Under "yet another no-bid contract," SAIC created the **Iraqi Media Network**, supposedly a "free and independent indigenous media network" that quickly became "a mouthpiece for the Pentagon"....Moreover, SAIC's work on the Iraqi Media Network was criticized by the Pentagon's Inspector General as having "widespread violations of normal contracting procedures." [8] [9]

## **Mind Games** <http://cjrarchives.org/issues/2006/3/schulman.asp>

*Quoting the article:*

In November 2001, a secretive Pentagon directorate took shape within the Office of the Assistant Secretary of Defense for Special Operations and .... its role was to harness a variety of informational activities to sway public opinion in the Middle East in favor of the administration's war on terror. It was called the Office of Strategic Influence.

Budgeted at \$100 million for its first year of operations, OSI's staff of twenty consisted of experts in psychological and cyber warfare, authorities on the Middle East and Islamic studies, and contractors from Science Applications International Corporation (SAIC), the Fortune 500 research and engineering firm that considers itself a specialist in "information dominance."

## **Science Applications International Corp.**

<http://www.public-i.org/wow/bio.aspx?act=pro&ddlC=51>

*Quoting Center for Public Integrity:*

The company has worked on a large number of high-profile government projects. SAIC had engineers on the ground in New York the day after the Sept. 11, 2001, terrorist attacks on the World Trade Center, ... .... Other high-profile projects SAIC has been involved in include the 1993 World Trade Center bombing investigation, the cleanups after the Three Mile Island nuclear disaster and the Exxon Valdez oil spill in Alaska, the first Gulf War, and space missions including the Voyager mission to Mars and the Hubble Space Telescope.

### **B.**

**NIST and its contractors, such as ARA, should have detected evidence of the use of exotic weaponry even in the context of NIST's intentional and, I assert, improper limitation of its investigation to "the sequence of events leading up to the collapse of the World Trade Center (WTC) towers."**

NIST states its WTC mandate in the following way:

*Quoting NIST:*

#### **E.1 Genesis of this investigation**

p. xxxv-xxxvi (pp. 37-38): "The specific objectives were:

"1. Determine why and how WTC 1 and WTC 2 collapsed following the initial impacts of the aircraft and why and how WTC 7 collapsed;"

And then, as a footnote, NIST autonomously changed its mandate.

*Quoting NIST:*

p. xxxvii (p. 39) footnote (!)<sup>2</sup> "The focus of the Investigation was on the sequence of events from the instant of aircraft impact to the initiation of collapse for each tower. For brevity in this report, this sequence is referred to as the probable collapse sequence," although it includes little analysis of the structural behavior of the tower after the conditions for collapse initiation were reached and collapse became inevitable.

1. NIST improperly limited the scope of its investigation to events preceding the destruction of each building.

2. NIST and its contractors did a fraudulent job of analyzing the events preceding the destruction of each building, for example, ignoring the "lathering up" of the buildings prior to their destruction.
3. Since NIST and its contractors did not study the destruction of the buildings, NIST should not use a narrow term like "collapse" to characterize the destruction of the buildings because doing so is deceptive and irresponsible. "Destruction" is a generic term that would more accurately describe the overall event.

*Quoting The American Heritage:*

The word "collapse" as a noun means: (a) The act of falling down or inward, as from loss of supports. (b) An abrupt failure of function, strength, or health; breakdown. The word "collapse" stems from the Latin word "collapsus," past participle of "collabi," meaning to fall together, fall in ruin.\*

\*Source: p. 261, The American Heritage DICTIONARY of the English Language, New College Edition, Houghton Mifflin, 1969+.

The WTC buildings, as many videos and pictures establish, were "blown to kingdom come," with most of their "material" powderized upward.

4. NIST and its contractors have failed to prove that there was an "aircraft impact" and they therefore failed to demonstrate that the starting point of their investigation was real. See: "Request for Correction by NIST for Its Invalid WTC Jetliner Animations and Analyses," by Dr. Morgan Reynolds, Request for Correction dated March 8, 2007

[http://www.ocio.os.doc.gov/ITPolicyandPrograms/Information\\_Quality/ssLINK/PROD01\\_002621](http://www.ocio.os.doc.gov/ITPolicyandPrograms/Information_Quality/ssLINK/PROD01_002621)

5. NIST states [p. xxxvii (p. 39) footnote (!)<sup>2</sup>],

"For brevity in this report, this sequence is referred to as the probable collapse sequence," although it includes little analysis of the structural behavior of the tower after the conditions for collapse initiation were reached and collapse became inevitable."

This statement is deceptive. A large portion of the sub-report, NCSTAR1-6 contains information that *appears* to be the product of a detailed analysis of what happened after the building's destruction was initiated. The document gives the appearance that this event was analyzed.

6. In the -"Response to Request for Correction from Dr. Judy Wood, dated March 16, 2007" dated July 27, 2007, NIST states,

"As stated in NCSTAR 1, NIST only investigated the factors leading to the initiation of the collapses of the WTC towers, not the collapses themselves."

This statement is in direct conflict with the actual report. NIST and its contractors cannot have it both ways. They must commit to analyzing an event or not analyzing an event. It appears NIST and its contractors wish to APPEAR to have analyzed the event, but then evade being held accountable for it. The entire NCSTAR1 report would appear to be the product of a psychological operation (PsyOPs).

According to the most recently defined limits for analyzing WTC2, only events in the time span given below should be analyzed.

Quoting *NIST*: Referring to WTC2.

**"Finding 30:** The time to collapse initiation was 56 minutes after aircraft impact (9:02:59 a.m. to 9:58:59 a.m.)"

However, the following figure would appear to fall outside of this.

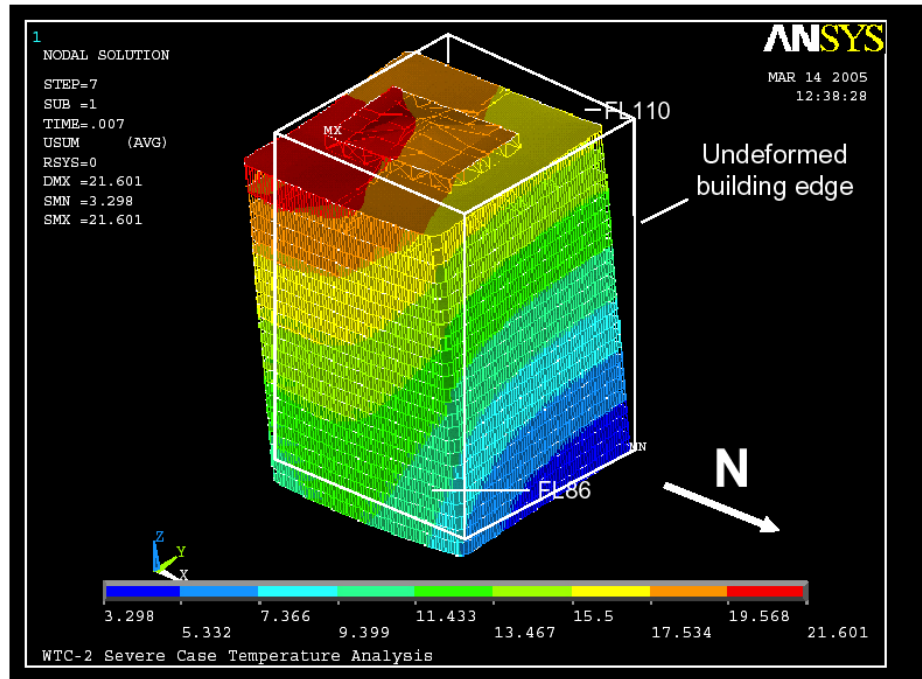


Figure 6–26. Kink on southeast corner near Floor 106 formed after collapse initiation.

Figure 47. Figure 6-26, Document NCSTAR1-6, page 183 (265), <http://wtc.nist.gov/NISTNCSTAR1-6.pdf>

Why does the following analysis also appear in this NCSTAR1-6 document?





**Figure 9–24. Total displacements of WTC 2 above Floor 86 at 43 min for Case D. Note tilt toward east and south (20x displacement magnification).**

**Figure 48.** Figure 9-24, Document NCSTAR1-6, page 319 (401), <http://wtc.nist.gov/NISTNCSTAR1-6.pdf>

It appears diagrams such as this were included in the NCSTAR1 reports to give the impression that a scientific analysis was performed for each tower.



Figure 6–9. Smoke expulsion at Floor 98 from north and east faces at collapse initiation.

**Figure 49.** Figure 6-9. Smoke expulsion at Floor 98 from north and east faces at collapse initiation Document NCSTAR1-6, page 164 (246), <http://wtc.nist.gov/NISTNCSTAR1-6.pdf>

The photos show WTC1 "lathering up," a phenomenon that NIST and its contractors should have analyzed. The above image is from the NCSTAR1-6 report, implying NIST and its contractors have seen it.

Document NCSTAR1-6, Page lxxv (77), <http://wtc.nist.gov/NISTNCSTAR1-6.pdf>  
 Quoting NIST: Referring to WTC1.

**"Finding 24:** The time to collapse initiation was 102 minutes from the aircraft impact (8:46:30 a.m. until 10:28:22 a.m.)"

The above lathering up phenomenon occurred within their mandate(s) and NIST and its contractors would have and should have analyzed this.



**Figure 50.** source [wtc-34\\_1\\_small.jpg](http://www.amanzafar.com)

Document NCSTAR1-6, Page lxxv (77), <http://wtc.nist.gov/NISTNCSTAR1-6.pdf>

*Quoting NIST:* Referring to WTC2.

**"Finding 30:** The time to collapse initiation was 56 minutes after aircraft impact (9:02:59 a.m. to 9:58:59 a.m.)"

The figure above shows both WTC towers standing. So, even using the redefined objective, NIST and its contractors should have analyzed the phenomena observed in this photo. WTC2 blowing "smoke rings." The "smoke rings" in this photo resemble the intermittent puffs of a smoker blowing smoke rings. Smoke from a fire is continuous. There is no visible fire in WTC2. There appears to be translucent-gray fuzzyblobs on the south face of WTC2, giving it a furry appearance.



**Figure 51.** source [wtc-39\\_1\\_small.jpg](#)



**Figure 52.** source [wtc-40\\_1\\_small.jpg](#)

WTC2 appears quite furry, especially on the south face, moments before its destruction.

Document NCSTAR1-6, Page lxxv (77), <http://wtc.nist.gov/NISTNCSTAR1-6.pdf>

Quoting *NIST*: Referring to WTC1.

**"Finding 24:** The time to collapse initiation was 102 minutes from the aircraft impact (8:46:30 a.m. until 10:28:22 a.m.)"



**Figure 53.** source [GJS-WTC010.jpg](#)



WTC1 lathering up shortly after the destruction of WTC2. This is a distinctive phenomenon that weapons experts like ARA would or should know about. This occurred prior to the "initiation of collapse" of WTC1.



**Figure 54.** source [image001.jpg](#)

Building 7 also showed this extraordinary phenomenon. We see a pattern here that ARA should have also seen.



**Figure 55.** source: <http://www.magnumphotos.com/CoreXDoc/MAG/Media/TR3/F/P/J/F/NYC20193.jpg> NYC20193.jpg

In the above photo, WTC1 and WTC7 are lathering-up simultaneously.



**Figure 56.** source NYC14148.jpg



**Figure 57.** source db\_Magnum21.jpg

The WTC7 lathering-up appears much darker in late afternoon, while void of WTC1 fumes in the foreground.





**Figure 58.** source [wtc-16\\_1\\_small.jpg](#)

The figure above shows both WTC towers standing. So, even using the redefined objective, NIST and its contractors should have analyzed the phenomena observed in this photo, such as the fuzzyblob on the south face of WTC1 (at the lower mechanical floor), the furry south wall of WTC2, and especially the fuming of southern Manhattan. Southern Manhattan should not be fuming south of the towers.



**Figure 59.** source [wtc-18\\_1\\_small.jpg](#)



**Figure 60.** source [wtc-22\\_1\\_small.jpg](#)

A fuzzyblob can be seen on the south face of WTC2 at the upper mechanical floor.





**Figure 61.** source [wtc-31\\_1\\_small.jpg](http://www.amanzafar.com)



**Figure 62.** source [wtc-32\\_1\\_small.jpg](http://www.amanzafar.com)

The second photo above shows another extraordinary phenomenon that NIST and its contractors should have addressed. I refer to this as "silly string." This silly string appears to be emanating from the upper mechanical floor of WTC1.



**Figure 63.** source [wtc-39\\_1\\_small.jpg](http://www.amanzafar.com)



**Figure 64.** source [wtc-40\\_1\\_small.jpg](http://www.amanzafar.com)

It is inexcusable for NIST to have surrounded itself with contractors whose primary expertise is lethality effects who then completely leave unanswered the effects discussed in this series of photographs.



**Figure 65.** source [wtc-71\\_1\\_small.jpg](#)



**Figure 66.** source [wtc-73\\_1\\_small.jpg](#)

A collapse does not look like this. The remaining section of the core columns that were not destroyed with the rest of the building, lathered up and turned to dust a few seconds later.



**Figure 67.** source [GJS-WTC009.jpg](#)



**Figure 68.** source [GJS-WTC010.jpg](#)

ARA is contracted by DTRA, among others, to know everything to do with weaponry. As a contractor for NIST, ARA should have been analyzed this phenomenon.





**Figure 69.** Source <http://911wtc.freehostia.com/gallery/originalimages/GJS-WTC26.jpg> GJS-WTC026.jpg



**Figure 70.** Source <http://911wtc.freehostia.com/gallery/originalimages/GJS-WTC27.jpg> GJS-WTC027.jpg

The two photos above were taken immediately before the destruction of WTC1. There appears to be a person hanging on the exterior of the building, indicated by arrow 2. The second photo shows much more fuming from this person as well as elsewhere. This is inconsistent with high temperatures.

C.

**NIST should, at a bare minimum, modify NCSTAR 1 to include the definition of “collapse.”**

This element of the appeal is mandated by nothing more than the literal content of the initial denial letter of July 27, 2007. That letter itself states that the word ‘collapse’ is defined in a way that is nowhere to be found in NCSTAR 1. Thus, NIST must at least put its definition of collapse into NCSTAR 1. In so doing, however, that minimal modification would then require that NIST explain phenomena occurring during the episode that NIST has defined. Note: The definition that NIST has put forth for the word ‘collapse’ cannot be limited to the time period that NCSTAR 1 is limited to; namely, up to, but not during, the actual destructive phase.



The initiation of ‘collapse’ as NIST now defines that term must, of necessity, come to grips with the following illustrated phenomena:

The Seattle Kingdome is an example of a collapse, imploded by conventional demolition.



**Figure 71.** [http://drjudywood.com/media/Kingdome\\_319180.mpg](http://drjudywood.com/media/Kingdome_319180.mpg)  
<http://portland.indymedia.org/media/media/2005/06/319180.mpg>

### *From the Seattle Times*

<http://archives.seattletimes.nwsource.com/cgi-bin/texis.cgi/web/vortex/display?slug=4012219&date=20000327>

"Dust choked downtown for nearly 20 minutes, blocking out the sun and leaving a layer of film on cars, streets and storefronts. The dust cloud reached nearly as high as the top of the Bank of America Tower and drifted northwest about 8 miles an hour."



**Figure 72.** [source: Terry Schmidt](#) [http://ken.ipl31.net/gallery/albums/wtc/img\\_1479\\_001.jpg](http://ken.ipl31.net/gallery/albums/wtc/img_1479_001.jpg) [img\\_1479\\_001.jpg](#)

I suspect DTRA and ARA know the difference between concrete chunks and micron-sized dust particles (e.g. the concrete chunks from the Seattle Kingdome and DTRA's concrete chunks shown in Figure 8).



**Figure 73.** (9/11/01) Cropped from [Source](http://911wtc.freehostia.com/gallery/originalimages/GJS-WTC28.jpg)  
<http://911wtc.freehostia.com/gallery/originalimages/GJS-WTC28.jpg> bubbler.jpg



**Figure 74.** (9/11/01) [Source](http://hereisnewyork.org/jpegs/photos/5245.jpg)  
<http://hereisnewyork.org/jpegs/photos/5245.jpg> snowball.jpg



GJS-WTC030e\_original.jpg



Image43.jpg



Image44.jpg



Image45.jpg



Image46.jpg



Image47.jpg

**Figure 75.** [source1](http://911wtc.freehostia.com/gallery/originalimages/GJS-WTC30.jpg) <http://911wtc.freehostia.com/gallery/originalimages/GJS-WTC30.jpg> source2



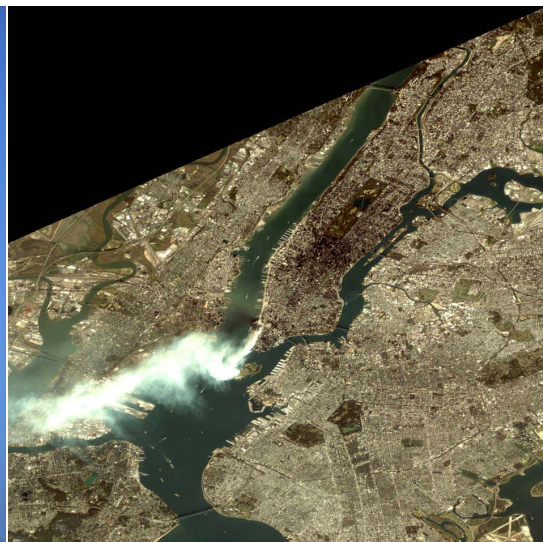


**Figure 76.** (9/11/01) [Source http://hereisnewyork.org/jpegs/photos/5704.jpg](http://hereisnewyork.org/jpegs/photos/5704.jpg) 5704.jpg

Note the two-toned coloration. This does not look normal.



**Figure 77.** (9/11/01) [Source](#) Image252.jpg



**Figure 78.** (9/12/01) [Source http://archive.spaceimaging.com/ikonos/2/kpms/2001/09/browse.108668.crss\\_sat.0.0.jpg](http://archive.spaceimaging.com/ikonos/2/kpms/2001/09/browse.108668.crss_sat.0.0.jpg) space imaging browse.jpg

Notice the two-toned color.

This is a satellite image captured on 9/12/01. It appears that the cloud emerging from the WTC site stays together until it reaches a particular altitude where it begins to just disperse. There appears to be a kink in the cloud trail where this occurs.





**Figure 79.** [source http://911wtc.freehostia.com/gallery/originalimages/GJS-WTC32.jpg](http://911wtc.freehostia.com/gallery/originalimages/GJS-WTC32.jpg) GJS-WTC032.jpg



**Figure 80.** [source http://911wtc.freehostia.com/gallery/originalimages/GJS-WTC35.jpg](http://911wtc.freehostia.com/gallery/originalimages/GJS-WTC35.jpg) GJS-WTC035.jpg

This is the rollout of the dust cloud from WTC1. The dust on the pavement in front of the cloud shows the dust from WTC2 stopped about one block before the pedestrian bridge. The dust cloud from WTC1 stopped at the pedestrian bridge, about the distance the WTC towers were separated by.



**Figure 81.** [source http://911wtc.freehostia.com/gallery/originalimages/GJS-WTC40.jpg](http://911wtc.freehostia.com/gallery/originalimages/GJS-WTC40.jpg) GJS-WTC040.jpg



**Figure 82.** [source http://911wtc.freehostia.com/gallery/originalimages/GJS-WTC43.jpg](http://911wtc.freehostia.com/gallery/originalimages/GJS-WTC43.jpg) GJS-WTC043.jpg

The dust clouds appear to roll out for a certain distance and then go up.





**Figure 83.** [source http://911wtc.freehostia.com/gallery/originalimages/GJS-WTC46.jpg](http://911wtc.freehostia.com/gallery/originalimages/GJS-WTC46.jpg) GJS-WTC046.jpg



**Figure 84.** [source http://911wtc.freehostia.com/gallery/originalimages/GJS-WTC49.jpg](http://911wtc.freehostia.com/gallery/originalimages/GJS-WTC49.jpg) GJS-WTC049.jpg

The dust from blowing up the Kingdome rolled out and settled down in less than 20 minutes.

Reference: <http://archives.seattletimes.nwsource.com/cgi-bin/texis.cgi/web/vortex/display?slug=4012219&date=20000327>

Yet, dust from the WTC buildings went and stayed up for days.



**Figure 85.** [source http://911wtc.freehostia.com/gallery/originalimages/GJS-WTC50.jpg](http://911wtc.freehostia.com/gallery/originalimages/GJS-WTC50.jpg) GJS-WTC050.jpg

The dust wafts up.

Flat, no rubble pile, fireman at ground level



**Figure 86.** (9/11/01) [Source](#) and [here](#) search2.jpg



**Figure 87.** (9/13/01, likely taken on 9/11/01) [Source](#) 010913\_5316.jpg

WTC6, an 8-story building, towers over the "rubble pile" remaining from WTC1 and 2. We know this photo was take before noon on 9/11/01. WTC7 can be seen in the distance. The Verizon Building is at a distance on the left.

This is a view from West Street, looking east across the remains of WTC1. FEMA entered this photo on 9/13/01, which is the earliest date of any postings for the 9/11 event. Other photos they have for 9/13/01 show many more people and equipment present. So, it is believed that this photo was taken on 9/11/01, but entered into their files on 9/13.

Let me reiterate that NIST, itself, without prompting from me, has now defined ‘collapse’ to mean “...a falling in, loss of shape, or reduction to flattened form or rubble of a structure.” That definition literally mandates that NIST must retract NCSTAR 1 in its entirety because NCSTAR 1 does not in the least cover the time period the defined events took place, all as I have fully illustrated both in my initial RFC/Supps and in this Appeal.

#### D.

**As NCSTAR 1 merely offered a “probable [hypothetical] ‘collapse’ sequence” [or properly speaking, hypothetical destruction sequence] purporting to explain the sequence of events leading up to the ‘collapse’ of the WTC towers,” NIST should modify the stated objective of NCSTAR 1 by deleting the claim that it was seeking determine why and how WTC 1 and WTC 2 ‘collapsed’ following the initial impacts of the aircraft...” Had NIST determined why and how WTC 1 and WTC 2 were destroyed, it would necessarily have had to deal with the following phenomena that are visually confirmed to have occurred during two separate and discrete time intervals.**

The first time interval is the entire course of the (+/-) <11 second destructive phase, something that NIST avoided by curtailing and cutting off, literally stopping its analysis, at a point defined as “leading up to ‘collapse’.”

The second time interval is the aftermath of the initial destructive phase that was confirmed by the visible rendering of steel and concrete into dust as it fell, followed by the continuing spread of a toxic and destructive cloud that brought about the destruction of vehicles as and when the said toxic cloud came



into contact with vehicles blocks away from the WTC complex and the spreading of fine particulate dust up to a certain point and the sudden cessation of the effect.

In each of the two time intervals above referenced, the precise capabilities of NIST contractors, like ARA and SAIC, would have permitted them to accurately indicate the exact weapons and lethality effects that were seen.

Instead, NIST's contractors engaged in a fraudulent cover-up.

I demonstrate this aspect of the Appeal as follows:

The initial denial letter of July 27, 2007 is incongruent in that in the one paragraph it stated what it actually did -- namely propose a sequence of events that stopped short of the actual destruction of the towers -- and, then, in another paragraph it continued to claim that its objective was to "determine why and how WTC 1 and WTC 2 collapsed following the initial impacts..." NIST did not do that. Had it done so, it would, of necessity, have had to take into account not just the phenomena mentioned in section C, above, but it would also have had to take into consideration the evidence of what else happened and how the site was cleaned up.

In this respect, NIST and its contractors did not take into consideration the obvious clean up process that is associated with the after effects of exotic weaponry, including directed energy weapons.

Here is what NIST and its contractors fraudulently ignored:

The dust cloud



**Figure 88.** (9/11/01) *Source* <http://hereisnewyork.org/jpegs/photos/5704.jpg> 5704.jpg



**Figure 89.** (9/11/01) [Source](http://hereisnewyork.org/ipegs/photos/5717.jpg)  
<http://hereisnewyork.org/ipegs/photos/5717.jpg>

This is a ground-level view of the enormous quantity of dust wafting skyward. Conventional demolition dust does not do this.



**Figure 90.** (9/11/01) [Source](http://911wtc.freehostia.com/gallery/originalimages/GJS-WTC56.jpg)  
<http://911wtc.freehostia.com/gallery/originalimages/GJS-WTC56.jpg>



**Figure 91.** (9/11/01) [Source](http://digitaljournalist.org/issue01110/original_images/Reuters/rtr08.jpg)  
[http://digitaljournalist.org/issue01110/original\\_images/Reuters/rtr08.jpg](http://digitaljournalist.org/issue01110/original_images/Reuters/rtr08.jpg)



**Figure 92.** ((9/11/01) [Source](http://uploads.abovetopsecret.com/ats37434_wtc_2_60kb.jpg)  
[http://uploads.abovetopsecret.com/ats37434\\_wtc\\_2\\_60kb.jpg](http://uploads.abovetopsecret.com/ats37434_wtc_2_60kb.jpg)

This is a view north, across Pine Street, which is parallel to Liberty Street and a block or two south of Liberty Street. The second photo above shows the destruction of WTC2 enveloping lower Manhattan in a blizzard of ultra-fine dust.



Steel turns to dust in mid-air.



**Figure 93.** (9/11/01) [Source: Shannon Stapleton, Reuters](http://upload.wikimedia.org/wikipedia/en/c/c5/DustifiedWTC2.jpg)  
<http://upload.wikimedia.org/wikipedia/en/c/c5/DustifiedWTC2.jpg>



**Figure 94.** (9/11/01) [Source](http://hereisnewyork.org/jpegs/photos/1539.jpg)  
<http://hereisnewyork.org/jpegs/photos/1539.jpg>

Toasted cars



**Figure 95.** [source](http://www.hybrideb.com/source/eyewitness/nyartlab/DSC07998.jpg)  
<http://www.hybrideb.com/source/eyewitness/nyartlab/DSC07998.jpg>



**Figure 96.** [source](http://www.worldfiredepartments.com/animations/images/firetruck-3.jpg)  
<http://www.worldfiredepartments.com/animations/images/firetruck-3.jpg>

Peculiar wilting of car doors and deformed window surrounds on FDR Drive.





**Figure 97.** (9/11/01) [Source](http://image03.webshots.com/3/3/40/70/21934070XFINSYUYrp_ph.jpg)  
[http://image03.webshots.com/3/3/40/70/21934070XFINSYUYrp\\_ph.jpg](http://image03.webshots.com/3/3/40/70/21934070XFINSYUYrp_ph.jpg)



**Figure 98.** (9/11/01) [source](http://image03.webshots.com/3/3/41/28/21934128ZFFrTnkajW_ph.jpg)  
[http://image03.webshots.com/3/3/41/28/21934128ZFFrTnkajW\\_ph.jpg](http://image03.webshots.com/3/3/41/28/21934128ZFFrTnkajW_ph.jpg)

Burned out cars and bus along West Broadway. Consistently, they seem to have missing door handles. And the gas tanks don't appear to explode, but several engine blocks appear to disintegrate.

The oranges



Dust covers an abandoned produce stand in lower Manhattan.

Photo © Aris Economopoulos / The Star-Ledger

**Figure 99.** [Source](http://digitaljournalist.org/issue0111/images/aris11.jpg)  
<http://digitaljournalist.org/issue0111/images/aris11.jpg>

Dust covers an abandoned produce stand in lower Manhattan.

E.

NIST should, likewise at a bare minimum, modify NCSTAR 1 by changing the wording of its objective by admitting that it did not determine why and how WTC 1 and WTC 2 ‘collapsed’ following the initial impacts of the aircraft...;” and, instead, acknowledge that its work actually consists in the proposal of a “probable ‘[hypothetical] ‘collapse’ sequence” explaining the sequence of events leading up to the ‘collapse’ of the WTC towers.”

[http://wtc.nist.gov/pubs/factsheets/faqs\\_8\\_2006.htm](http://wtc.nist.gov/pubs/factsheets/faqs_8_2006.htm)

The August 8, 2006 [Fact Sheet \(Answers to Frequently Asked Questions\)](#) by NIST states, "NIST estimated the elapsed times for the first exterior panels to strike the ground after the collapse initiated in each of the towers to be approximately **11 seconds** for WTC 1 and approximately **9 seconds** for WTC 2." (Question #6.)

Quoting NIST August 8, 2006 faqs:

**6. How could the WTC towers collapse in only 11 seconds (WTC 1) and 9 seconds (WTC 2)—speeds that approximate that of a ball dropped from similar height in a vacuum (with no air resistance)?**

NIST estimated the elapsed times for the first exterior panels to strike the ground after the collapse initiated in each of the towers to be approximately 11 seconds for WTC 1 and approximately 9 seconds for WTC 2. These elapsed times were based on: (1) precise timing of the initiation of collapse from video evidence, and (2) ground motion (seismic) signals recorded at Palisades, N.Y., that also were precisely time-calibrated for wave transmission times from lower Manhattan (see NCSTAR 1-5A).

As documented in Section 6.14.4 of NIST NCSTAR 1, these collapse times show that:

*“... the structure below the level of collapse initiation offered minimal resistance to the falling building mass at and above the impact zone. The potential energy released by the downward movement of the large building mass far exceeded the capacity of the intact structure below to absorb that energy through energy of deformation.*

*Since the stories below the level of collapse initiation provided little resistance to the tremendous energy released by the falling building mass, the building section above came down essentially in free fall, as seen in videos. As the stories below sequentially failed, the falling mass increased, further increasing the demand on the floors below, which were unable to arrest the moving mass.”*

In other words, the momentum (which equals mass times velocity) of the 12 to 28 stories (WTC 1 and WTC 2, respectively) falling on the supporting structure below (which was designed to support only the static weight of the floors above and not any dynamic effects due to the downward momentum) so greatly exceeded the strength capacity of the structure below that it (the structure below) was unable to stop or even to slow the falling mass. The downward momentum felt by each successive lower floor was even larger due to the increasing mass.

From video evidence, significant portions of the cores of both buildings (roughly 60 stories of WTC 1 and 40 stories of WTC 2) are known to have stood 15 to 25 seconds after collapse initiation before they, too, began to collapse. Neither the duration of the seismic records nor video evidence (due to obstruction of view caused by debris clouds) are reliable indicators of the total time it took for each building to collapse completely.

A 9-second "collapse" time for WTC2 is impossible. It violates the laws of physics.

## F.

**NIST can confirm that directed energy weapons have been used by making inquiries at the Directed Energy Directorate, as I have done, and by calling in ARA and SAIC witnesses, together with the First Responders, such as Patricia Ondrovic.**

NIST has, unfortunately, approached the level of negligence in not responding directly to my assertion that directed energy weapons were used to destroy the WTC towers. NIST is to be commended, as I indicated earlier, for procedurally acknowledging that it understood and would respond to my claim. However, despite the recognition of the claim, NIST did not address it.

I can now demonstrate that I, myself, have sought the input of those agencies of the US government that are responsible for maintaining our stockpile of directed energy weapons; namely, the Directed Energy Directorate, located at Kirtland AFB, New Mexico and headed by Susan A. Thornton. I have communicated with Ms. Thornton and have received two responses submitted on her behalf by her deputy Rich Garcia, the content of which is set forth below:

### CORRESPONDENCE:

DEW Information Request Letter, with comments, 7 April 2007, Judy Wood, comments by Jerry Leaphart ([posted](http://drjudywood.com/articles/NIST/DEW_letter.html)) [http://drjudywood.com/articles/NIST/DEW\\_letter.html](http://drjudywood.com/articles/NIST/DEW_letter.html)  
**Attached: Susan\_J\_Thornton.pdf, ThorntonConfirmat,4\_9\_07.pdf**

DEW Information follow-up letter to response from the Office of Public Affairs, Directed Energy Directorate, Kirtland Air Force Base, May 3, 2007, from Jerry Leaphart to Rich Garcia ([posted](http://drjudywood.com/pdf/070503_letterGarcia.pdf)) [http://drjudywood.com/pdf/070503\\_letterGarcia.pdf](http://drjudywood.com/pdf/070503_letterGarcia.pdf)  
**Attached: 070503\_letterGarcia.pdf**



# FAX COVER SHEET



**To: Jerry V. Leaphart**

**Attorney-at-Law**

Phone Number: (2030-825-6265

FAX Number: (203) 825-6256

**From:**

**Juventino R. "Rich" Garcia**  
**Air Force Research Laboratory/DEO-PA**  
3550 Aberdeen Avenue SE  
Kirtland AFB NM 87117-5776

Commercial (Voice): (505) 846-1911

FAX: (505) 846-0423

Number of Pages (including cover): 1

Date Sent: May 4 2007

**MESSAGE:** I received your fax yesterday and your FedEx package today, and had a chance to review the materials you sent. During our telephone conversation I outlined a variety of directed energies that might have future weapons applications but I'm not aware of any that are mature enough to cause the damage at the World Trade Center. Lasers are the most likely candidates for nearer-term weapons use and, to that end, we have conducted laboratory tests to evaluate the effects of laser energy on different materials. For the most part, those materials have been metals, not concrete structures. Effects on metals are from the heat generated by an intense beam of coherent light, which cause the metals to weaken and split. Given sufficient heat, metals would melt (become liquids) and, given significantly more heat, could turn to gases. Since we haven't tested concrete I don't know if the effect would be dust. You report phenomena that we cannot explain here, either because we don't have enough data or because the phenomena are not within our area of expertise. While on a personal level I may find Dr Wood's investigation interesting and worthy of further consideration, on a professional level we are unable to devote our limited resources to activities outside of our charter. I wish you success in your endeavor and am available to answer whatever directed energy questions may arise.

Respectfully,

JUVENTINO R. GARCIA  
Director of Public Affairs  
Directed Energy Directorate  
Air Force Research Laboratory  
Kirtland AFB, NM 87117-5776

Response from Juventino R. "Rich" Garcia via fax, Directed Energy Directorate, Air Force Research Laboratory/DEO-PA, Kirtland AFB NM, May 4, 2007, from Rich Garcia to Jerry V. Leaphart ([posted](#)) [http://drjudywood.com/articles/NIST/Garcia\\_letter.html](http://drjudywood.com/articles/NIST/Garcia_letter.html)

**Attached: Garcia1.gif**

More recently I have sent a request for information to Dr. James A. Tegnalia, head of the Defense Threat Reduction Agency who, by virtue of what his agency does, would be well-suited to acknowledge that the clean up process at Ground Zero was entirely consistent with cleanup the after effects of the use of directed energy weapons and/or other exotic weaponry. NIST should have done this either during its investigation; or, at a minimum, in

determining its response to my RFC/Supps. In the absence of so doing, NIST literally lacks a proper foundation for denying my request for correction and for asserting that it lacks evidence to support the claims I have made concerning directed energy weapons use and/or ARA's involvement with such weapons, which I have now confirmed and which should have been known to NIST if, as is claimed, it engaged in a "rigorous organizational conflict of interest analysis."

DEW Information Request Letter to DTRA, 20 August 2007, from Dr. Judy Wood to Dr. James A. Tegnalia.

[Attached: 070820\\_ Tegnalia.pdf](#)

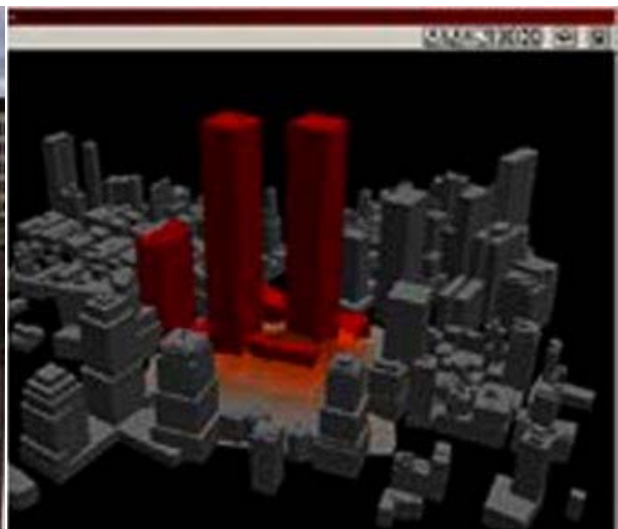
Any such analysis would, of necessity, have revealed that ARA is, first and foremost, at the epicenter of what is known as "the military industrial complex." Why is that expertise relevant to a report on what caused the destruction of the WTC towers? The answer is that ARA's expertise is best suited to preventing the report on what caused the destruction of the WTC towers from focusing on all of the abundant evidence that has been put forward in the RFC/Supps pointing clearly and unequivocally to the use of such weapons.

Pictures are often worth "a 1000 words." I conclude by offering this comparative photographic array showing what ARA claims its capacities are and the similarity between that and what happened to the WTC towers.

I think you will agree with me that the following photographic comparison is startling:



**Figure 100(a).** [source](#) *defens1\_poof\_1.jpg*



**Figure 100(b).** [source](#) *sec\_1\_lwtc.jpg*

### III.

#### Conclusion

I conclude by once again acknowledging appreciation for the procedural handling of my RFC/Supps. I now request that the procedures be followed up with the proper analytical approach that will result in the retraction of NCSTAR 1 in its entirety because the report does not properly account for the destruction of the WTC towers because it fails to address the use of directed energy weapons and because those who assisted NIST had clear conflicts of interest that resulted in the issuance of a fraudulent report.

If any additional information is needed properly to process this Appeal, please revert.

Respectfully,

Dr. Judy Wood

Cc  
Jerry V. Leaphart  
Attorney for Dr. Judy Wood  
8 West Street  
#203  
Danbury CT 06810  
203-825-6265



Attachments:

			Pages
RFC	March 16, 2007	070316_PROD01_002667.pdf	43
Supplement#1	March 29, 2007	070329_PROD01_002722.pdf	2
Supplement#2	April 20, 2007	070420_PROD01_002899.pdf	28
NIST Extension	June 29, 2007	070629_PROD01_003260.pdf	1
NIST Response	July 27, 2007	070727_PROD01_003222.pdf	3
Minh Vuong	August 17, 2007	Jsleaphart@cs.com, 02-29 PM.pdf	4
editor@nationaldefensemagazine.org	August 17, 2007	Jsleaphart@cs.com, 02-45 PM.pdf	5
Thornton letter	April 7, 2007	Susan_J_Thornton.pdf	4
Thornton confirmation	April 9, 2007	ThorntonConfirmat,4_9_07.pdf	2
Garcia phone call			
Jerry Leaphart follow-up	May 3, 2007	070503_letterGarcia.pdf	18
Garcia fax response	May 4, 2007	Garcia1.gif	1
Dr. James A. Tegnalia	August 20, 2007	070820_Tegnalia.pdf	5
			116